

FOR BUSINESS.  
FOR LIFE.  
FOR RELAXATION.

*Jewel of Badva*  
**MONTENEGRINA**  
RESIDENCE

# SEA VIEW FROM EVERY UNIT

THE BIGGEST INVESTMENT POTENTIAL IN BUDVA



# MONTENEGRINA RESIDENCE

MONTENEGRINA REPRESENTS A UNIQUE, MODERN AND EXCLUSIVE COMPLEX – THE NEW FACE OF BUDVA AND THE JEWEL OF THE MONTENEGRIN COASTLINE.

LOCATED JUST A 7-MINUTE WALK FROM THE CITY CENTER AND A 10-MINUTE WALK FROM THE MOST ATTRACTIVE BEACHES.

BE PREPARED TO EMBRACE YOUR NEW LIFESTYLE – WAKING UP WITH A CUP OF COFFEE AND A PANORAMIC VIEW OF THE CITY AND THE SEA.

THE BUILDING IS SURROUNDED BY 3.300 SQ. M OF GREEN AREA.

THE BIGGEST INVESTMENT POTENTIAL IN BUDVA!



1 LUXURY FIVE-STAR APARTMENTS

2 MANAGEMENT COMPANY

3 SPA CENTER

4 POOL AND POOL BAR

5 EXCLUSIVE RESTAURANT

6 GYM

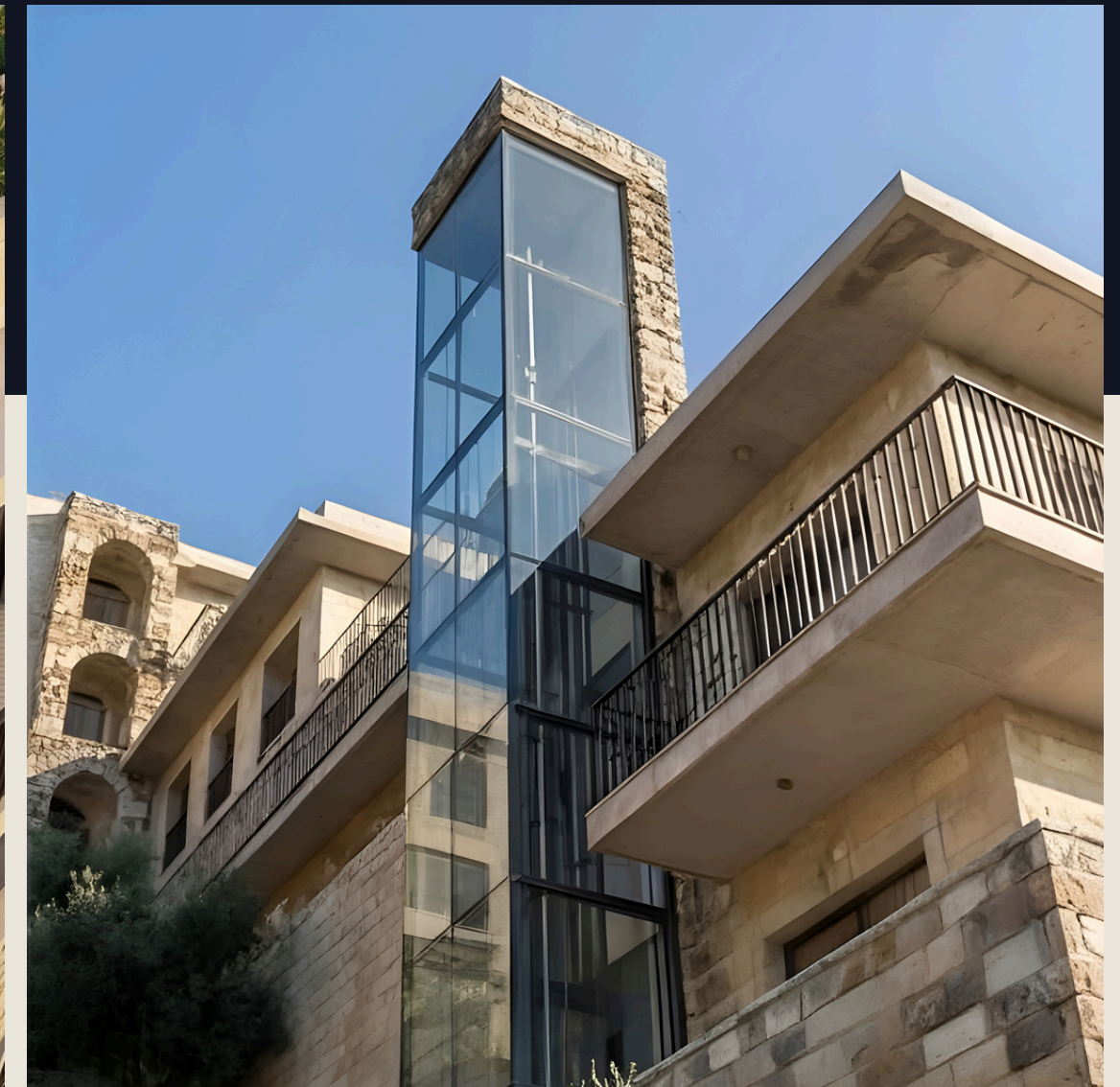
7 PLAYGROUND



# TOP INVESTMENT!

Apartment structures ideal for future rental!

Take advantage of this opportunity – prices are lowest at the start of construction!  
By the time the project is completed, apartment values are expected to increase by 40–70%.  
Return on investment from rental is 10–15% per year!



The project is being developed in the Dubovica Lux neighborhood in Budva, in the immediate vicinity of the bus station, the faculty and the new Mega Mall on the Bypass.

The building is just a 7-minute walk from the main bus station, a 7-minute walk to the Old Town and a 5-minute walk to the beach.

It features 39 apartments, 40 parking spaces, a reception area, 24/7 security, a spa center with a gym, jacuzzi, and sauna, an outdoor heated pool available year-round, a pool bar, an exclusive restaurant and a children's playground. Additional amenities include a shuttle service to the beach and an adventure park located above the complex.



We offer studio apartments, one-bedroom, two-bedroom and three-bedroom apartments, as well as underground garages.

**All apartments have a sea view!**

The building is built in a classic style, oriented to the south and has large glass openings. First-class European ecological materials are used for construction. The apartments are sold with a designer overhaul included in the price. You can see examples of the design in our completed projects

Fine works included in the price: suspended ceilings, lighting, paint, decorative stone, granite or parquet floors, fully equipped bathrooms, Italian sanitary ware, underfloor heating, a smart system in each apartment, aluminium joinery and the facade is made of natural stone.

**Planned completion: October 2027.**

# For Vacation. Life. Business.

Our company offers furnishing, maintenance and rental services for apartments throughout the year!

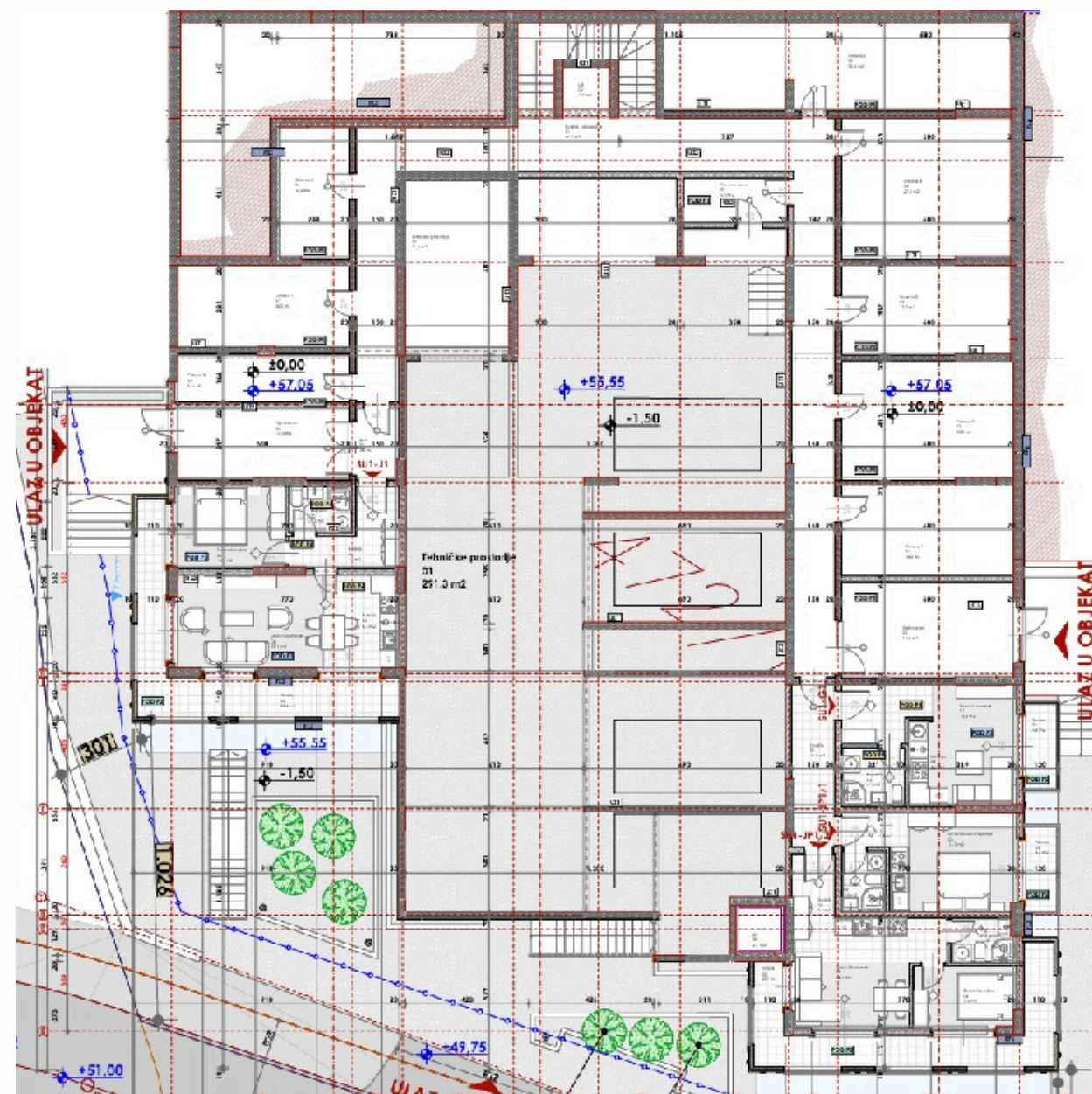
The catalogue shows prices with discounts for advance payment and prices for deferred payment. When paying for deferred payment, it is necessary to pay 50% according to the contract, while the remaining 50% can be paid in monthly or quarterly instalments until the end of the construction period.

You buy real estate directly from the investor, without agency costs, without real estate sales tax in the amount of 3-5%. The prices of the apartments include VAT.

We provide all clients with turnkey apartment and furnishing services, including furniture and appliances for an additional price, as well as year-round apartment maintenance and rental.

We also provide full legal support, court interpreter services for English, notary services, as well as complete legal assistance until the apartment is registered in your name.

# GROUND FLOOR PLAN | SU1 |



003.Legende površina prizemlje segment I			
Br.	Prostorija	Površina	Obim
<b>Tehničke prostorije 2</b>			
01	Tehničke prostorije	291,27	142,80
02	Lift	2,73	6,62
03	Tehnička prostorija	21,27	19,08
		<b>315,27 m²</b>	
<b>SU1-JP1/2</b>			
01	Hodnik	3,15	7,31
02	Dnevni boravak	16,67	17,93
03	Kupaćilo	3,12	7,34
04	Spavaća soba	7,27	11,23
05	Terasa	18,93	36,09
		<b>49,14 m²</b>	
<b>SU1-JP1/1</b>			
01	Hodnik	1,94	5,67
02	Kupaćilo	2,97	6,98
03	Dnevna soba	14,28	15,30
04	Terasa	3,82	8,67
		<b>23,01 m²</b>	
<b>SU1-J1</b>			
01	Hodnik	6,50	13,09
02	Kupaćilo	3,27	7,32
03	Spavaća soba	10,40	13,07
04	Dnevni boravak	18,13	18,05
05	Kuhinja	6,31	10,40
06	Terasa	17,37	35,41
		<b>61,98 m²</b>	
<b>SU1-G1</b>			
01	Dnevni boravak	15,50	21,93
02	Kuhinja	3,69	8,28
03	Terasa	3,39	8,43
04	Kupaćilo	4,14	8,15
		<b>26,72 m²</b>	
<b>Ostave</b>			
01	Ostava 1	17,98	17,88
02	Ostava 2	23,82	19,96
03	Ostava 3	17,72	17,72
04	Ostava 4	27,83	21,26
05	Ostava 5	35,42	31,91
06	Ostava 6	10,58	13,77
07	Ostava 7	16,45	17,42
08	Ostava 8	9,53	15,23
		<b>159,33 m²</b>	
<b>Komunikacije</b>			
01	Hodnik	11,83	19,51
02	Hodnik i stepenište	66,47	96,13
03	Lift	2,72	6,60
04	Tampon zona	5,13	9,88
05	Vjetrobran	14,28	17,15
06	Hol	3,50	7,99
07	Vjetrobran	19,33	18,71
		<b>123,26 m²</b>	
		<b>758,71 m²</b>	



# ONE-BEDROOM APARTMENT

## SU1-JP1/2

### 49.14 M2

GROUND FLOOR  
(HEIGHT OF THE FIRST FLOOR)

TERRACE

PANORAMIC VIEW OF THE SEA

1 BEDROOM

1 BATHROOM

PRICE FOR 100% PAYMENT: 185,652.00 €

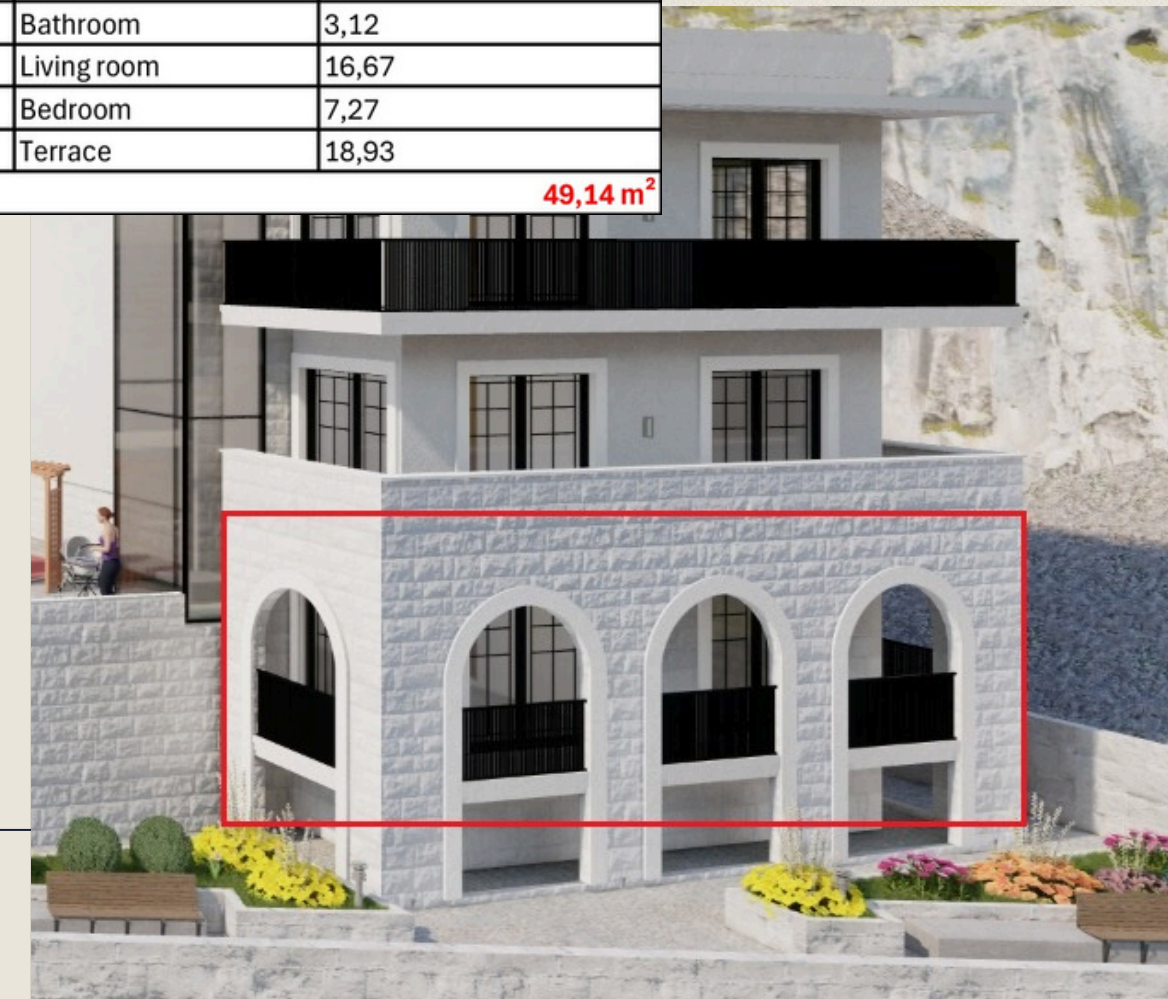
PRICE FOR PAYING IN INSTALLMENTS: 195,966.00€

#### PRICE GROWTH IN CONSTRUCTION

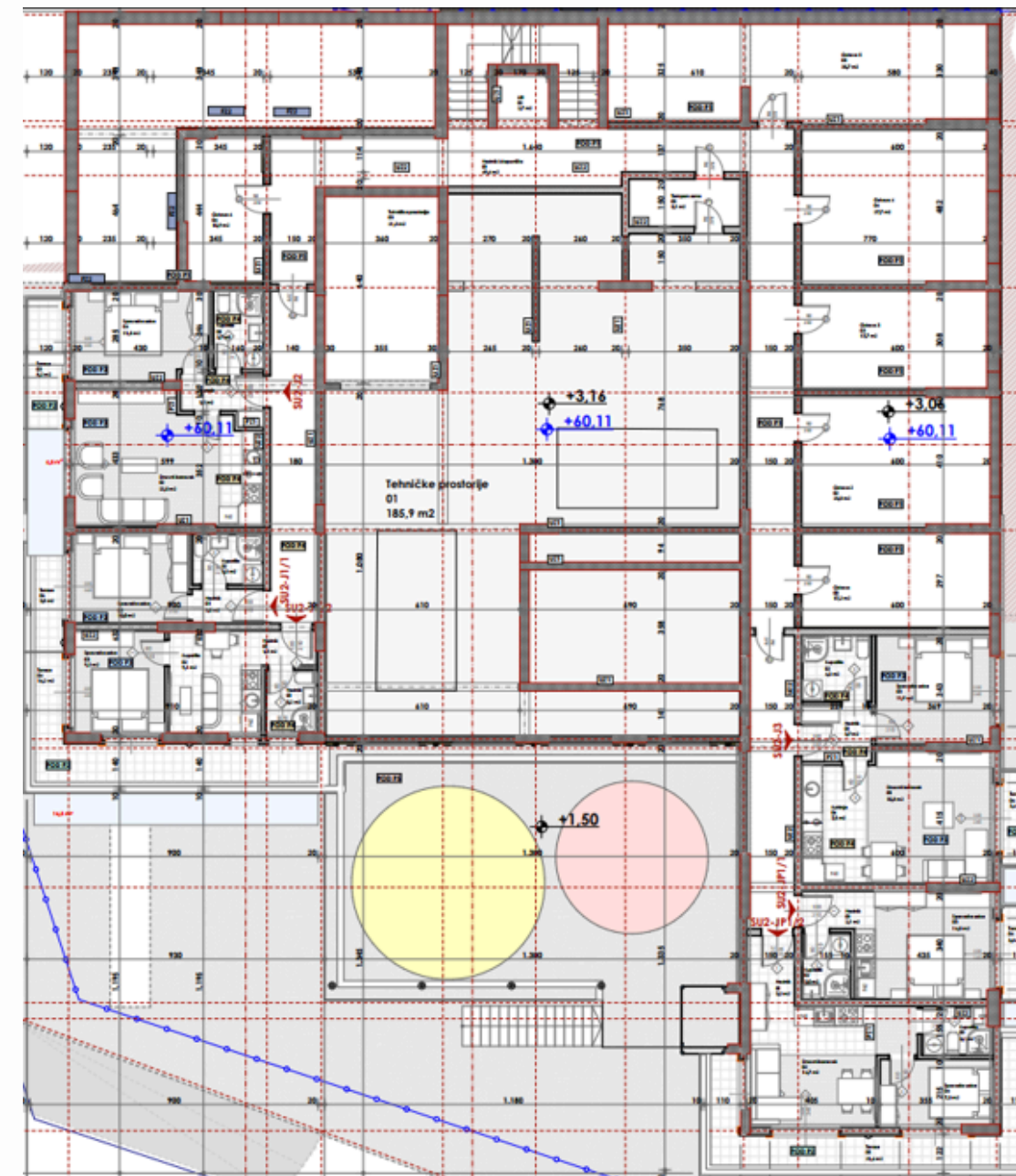
JAN-2026	JUN-2026	OCT-2026	JAN-2027	JUN-2027
232,888.00€	265,384.00€	292,464.00€	314,128.00€	324,960.00€



SU1-JP1/2		
01	Corridor	3,15
02	Bathroom	3,12
03	Living room	16,67
04	Bedroom	7,27
05	Terrace	18,93
		<b>49,14 m<sup>2</sup></b>



# FIRST FLOOR PLAN | SU2 |



004. Legende površina i sprat segment I			
Br.	Prostorija	Površina	Obim
<b>Tehničke prostorije 2</b>			
01	Tehničke prostorije	185.93	114.67
03	Tehnička prostorija	21.26	19.15
		<b>207.19 m<sup>2</sup></b>	
<b>SU2-JP1/2</b>			
01	Hodnik	3.15	7.31
02	Dnevni boravak	16.67	17.93
03	Kupaćilo	3.12	7.34
04	Spavaća soba	7.32	11.23
05	Terasa	20.96	36.50
		<b>51.22 m<sup>2</sup></b>	
<b>SU2-JP1/1</b>			
01	Hodnik	2.08	5.99
02	Kupaćilo	2.97	6.98
03	Spavaća soba	14.77	15.74
04	Terasa	3.82	8.67
		<b>23.64 m<sup>2</sup></b>	
<b>SU2-J3</b>			
01	Hodnik	3.70	7.75
02	Kupaćilo	4.32	8.32
03	Spavaća soba	11.93	14.09
04	Kuhinja	7.50	11.42
05	Dnevni boravak	15.83	16.00
06	Terasa	3.39	8.20
		<b>46.67 m<sup>2</sup></b>	
<b>SU2-J2</b>			
01	Hodnik	3.37	8.66
02	Dnevni boravak	22.52	20.58
03	Terasa	7.73	16.21
04	Spavaća soba	11.53	14.10
05	Kupaćilo	3.70	7.88
		<b>48.85 m<sup>2</sup></b>	
<b>SU2-J1/2</b>			
01	Hodnik	4.99	12.84
02	Kupaćilo	9.07	12.06
03	Spavaća soba	9.10	12.13
04	Terasa	16.23	27.00
		<b>39.39 m<sup>2</sup></b>	
<b>SU2-J1/1</b>			
01	Hodnik	2.32	6.54
02	Kupaćilo	3.34	7.42
03	Spavaća soba	9.99	12.77
06	Terasa	3.77	8.93
		<b>19.42 m<sup>2</sup></b>	
<b>Ostave</b>			
00	Ostava	17.16	17.60
02	Ostava 2	23.80	19.96
03	Ostava 3	17.71	17.72
04	Ostava 4	27.67	21.20
05	Ostava 5	35.70	32.05
06	Ostava 6	10.91	14.10
		<b>132.95 m<sup>2</sup></b>	
<b>Komunikacije</b>			
01	Hodnik i stepenište	69.59	97.11
02	Lift	2.72	6.60
03	Tampon zona	5.13	9.88
		<b>77.44 m<sup>2</sup></b>	
		<b>646.77 m<sup>2</sup></b>	

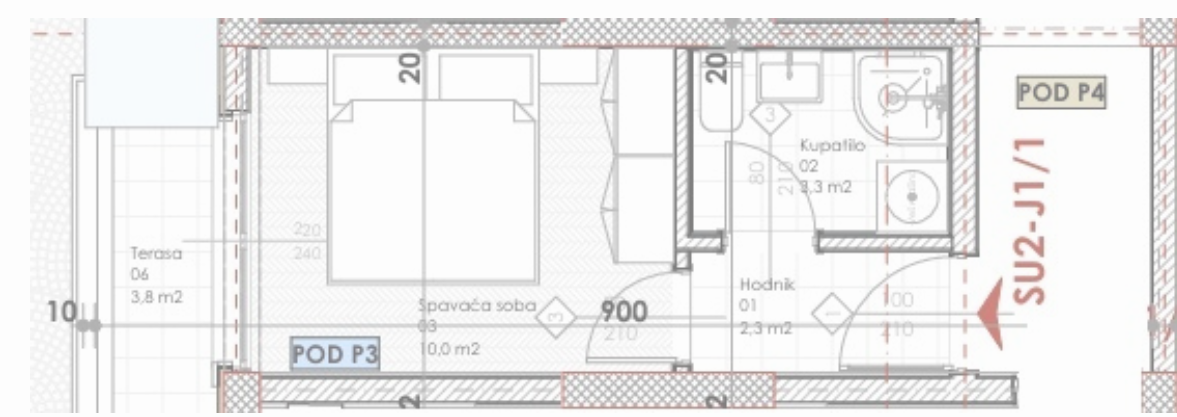


# STUDIO APARTMENT

## SU2-J1/1

### 19.42 M2

FIRST FLOOR  
(HEIGHT OF THE SECOND FLOOR)



#### SU2-J1/1

01	Corridor	2,32
02	Bathroom	3,34
03	Bedroom	9,99
04	Terrace	3,77



# RESERVED



PRICE FOR 100% PAYMENT: 77,000.00€

PRICE FOR PAYING IN INSTALLMENTS: 80,000.00€

#### PRICE GROWTH IN CONSTRUCTION

JAN-2026	JUN-2026	OCT-2026	JAN-2027	JUN-2027
91,274.00€	102,926.00€	112,636.00€	120,404.00€	124,288.00€





## TWO-BEDROOM APARTMENT

# SU2-JP1

## 82.91 M2

FIRST FLOOR  
(HEIGHT OF THE SECOND FLOOR)

TERRACE + BALCONY

PANORAMIC VIEW OF THE SEA

2 BEDROOMS

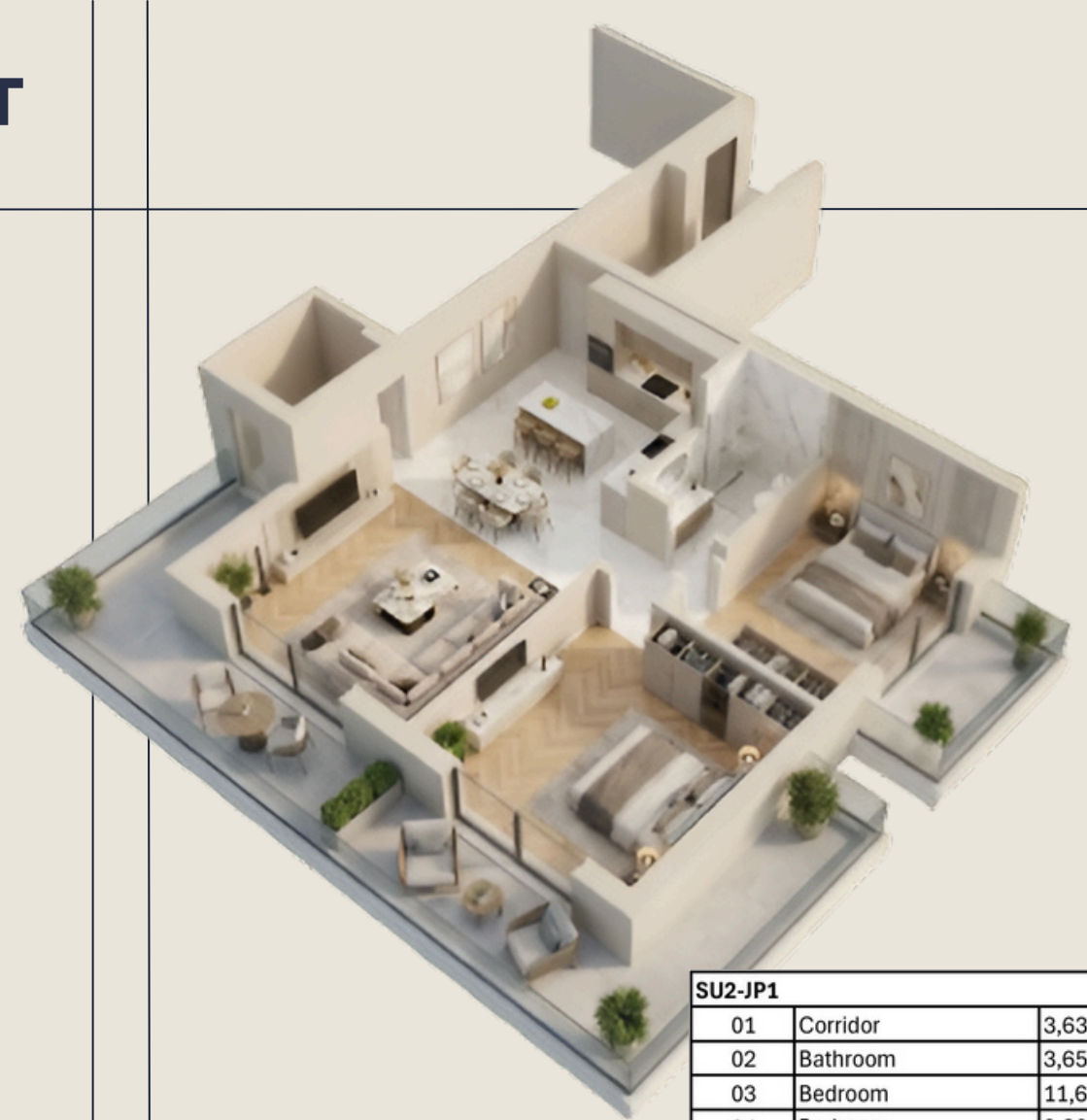
1 BATHROOM

PRICE FOR 100% PAYMENT: 279,718.00€

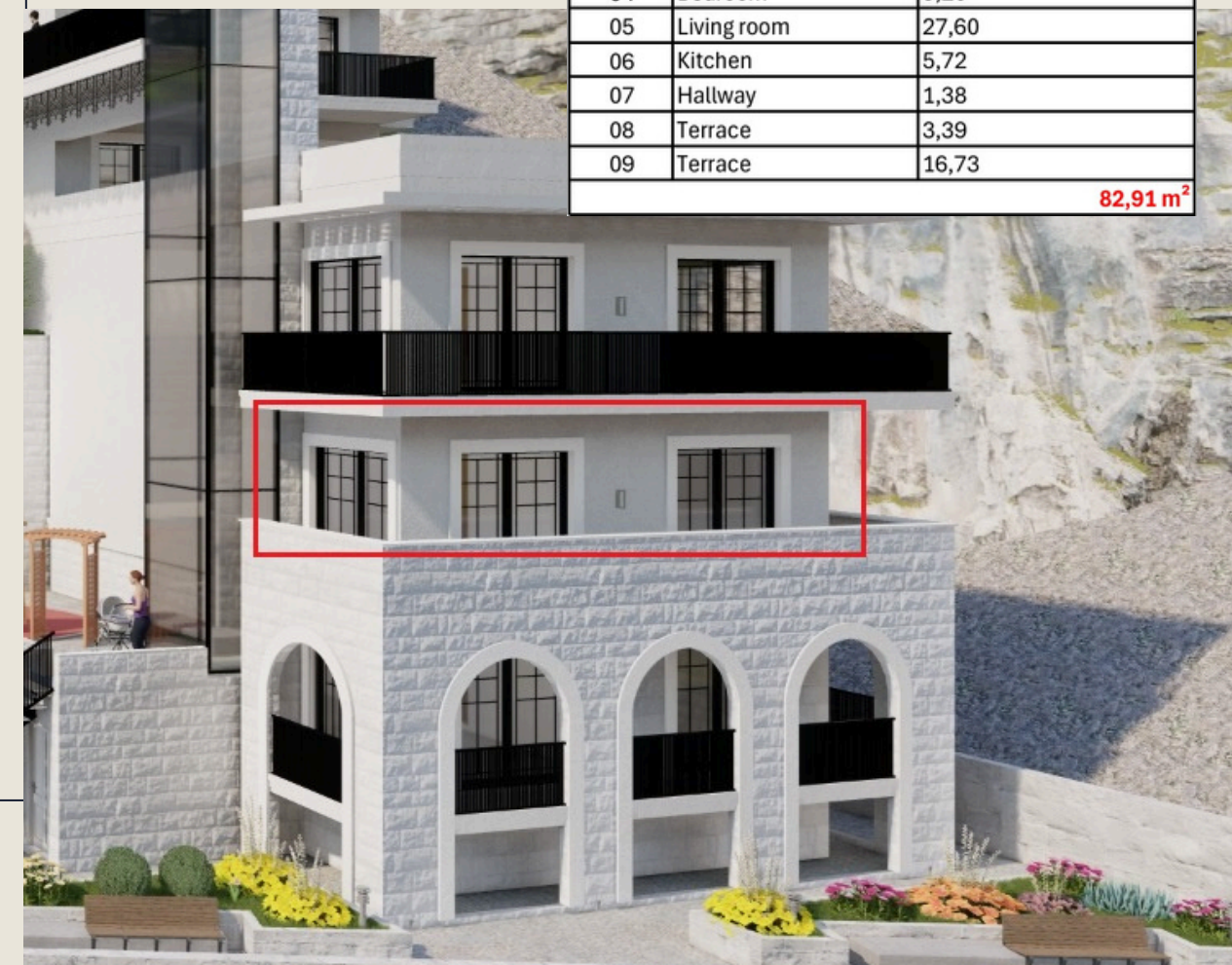
PRICE FOR PAYING IN INSTALLMENTS: 296,172.00€

### PRICE GROWTH IN CONSTRUCTION

JAN-2026	JUN-2026	OCT-2026	JAN-2027	JUN-2027
353,761.00€	403,123.00€	444,256.00€	477,166.00€	493,620.00€



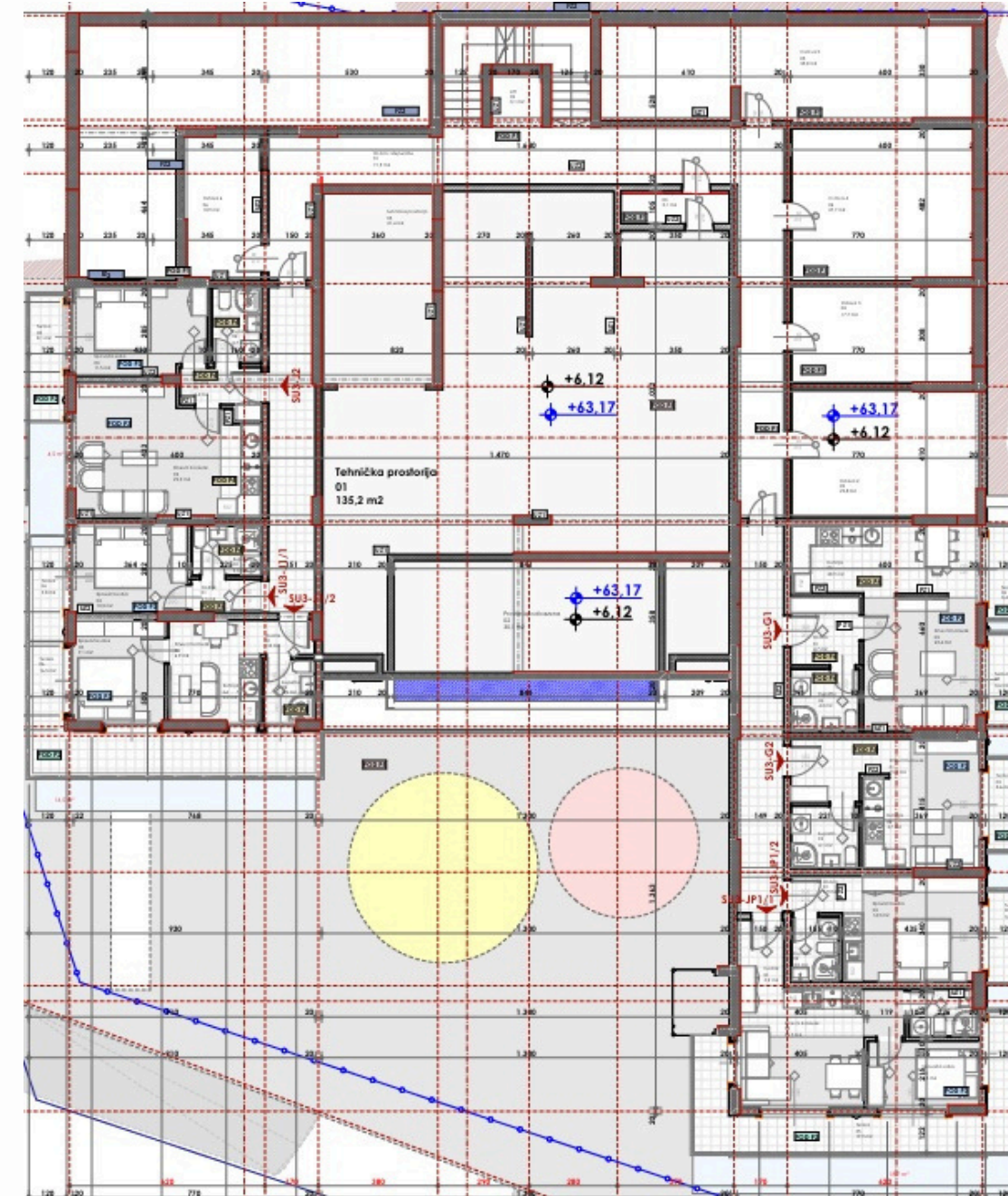
SU2-JP1		
01	Corridor	3,63
02	Bathroom	3,65
03	Bedroom	11,61
04	Bedroom	9,20
05	Living room	27,60
06	Kitchen	5,72
07	Hallway	1,38
08	Terrace	3,39
09	Terrace	16,73
		<b>82,91 m<sup>2</sup></b>



# PRICE GROWTH FOR UNITS ON THE FIRST FLOOR

	M2	STARTING PRICE	INSTALLMENT PRICE	OCT-2025	JAN-2026	JUN-2026	OCT-2026	JAN-2027	JUN-2027
SU2-J1	62.85	213,690.00€	226,260.00€	238,830.00€	270,255.00€	307,965.00€	339,390.00€	364,530.00€	377,100.00€
SU2-J1/1	19.42	77,000.00€	80,000.00€	81,564.00€	91,274.00€	102,926.00€	112,636.00€	120,404.00€	124,288.00€
SU2-J1/2	39.39	137,865.00€	145,743.00€	149,682.00€	169,377.00€	193,011.00€	212,706.00€	228,462.00€	236,340.00€
SU2-J3	46.67	179,751.00€	189,085.00€	210,639.00€	242,554.00€	280,852.00€	312,767.00€	338,299.00€	351,065.00€
SU2-JP1	82.91	279,718.00€	296,172.00€	312,626.00€	353,761.00€	403,123.00€	444,258.00€	477,166.00€	493,620.00€

# SECOND FLOOR PLAN | SU3 |



005.Legende površina II sprat segment I			
Bř.	Prostorija	Površina	Obim
<b>Tehničke prostorije 2</b>			
01	Tehnička prostorija	135.24	80.74
02	Prostor ispod bazena	30.06	23.96
03	Tehnička prostorija	21.39	19.15
		<b>186.69 m²</b>	
<b>SU3-JP1/2</b>			
01	Hodnik	1.94	5.67
02	Kupařilo	2.97	6.98
03	Spavaća soba	14.28	15.30
07	Terasa	3.39	8.19
		<b>22.58 m²</b>	
<b>SU3-JP1/1</b>			
01	Hodnik	3.15	7.31
02	Dnevni baravak	14.67	17.93
03	Kupařilo	3.12	7.34
04	Spavaća soba	7.32	11.23
05	Terasa	18.40	36.26
		<b>46.66 m²</b>	
<b>SU3-J2</b>			
01	Hodnik	3.37	8.46
02	Kupařilo	3.70	7.88
03	Spavaća soba	11.51	14.10
04	Dnevni baravak	22.52	20.58
05	Terasa	7.60	16.01
		<b>48.70 m²</b>	
<b>SU3-J1/2</b>			
01	Hodnik	1.83	5.63
02	Kupařilo	3.16	7.21
03	Dnevni baravak	6.92	12.12
04	Kuhinja	2.19	6.29
05	Spavaća soba	9.10	12.13
06	Terasa	14.46	27.08
		<b>39.66 m²</b>	
<b>SU3-J1/1</b>			
01	Hodnik	2.32	6.54
02	Kupařilo	3.34	7.42
03	Spavaća soba	9.99	12.77
06	Terasa	3.77	8.94
		<b>19.42 m²</b>	
<b>SU3-G2</b>			
01	Dnevni baravak	15.56	21.93
02	Kuhinja	3.69	8.28
03	Terasa	3.39	8.43
04	Kupařilo	4.14	8.15
		<b>26.78 m²</b>	
<b>SU3-G1</b>			
01	Hodnik	4.63	8.80
02	Kupařilo	4.24	8.24
03	Dnevni baravak	23.43	24.23
03	Kuhinja	4.92	8.88
05	Terasa	3.39	8.43
06	Terasa	3.38	8.19
		<b>43.99 m²</b>	
<b>Ostave</b>			
02	Ostava 2	23.84	19.96
03	Ostava 3	17.71	17.72
04	Ostava 4	27.67	21.20
05	Ostava 5	35.77	32.09
06	Ostava 6	10.93	14.13
		<b>115.92 m²</b>	
<b>Komunikacije</b>			
01	Hodnik i stepenište	71.48	96.09
02	Lift	3.10	7.05
03	Tampon zona	5.13	9.88
		<b>79.71 m²</b>	
		<b>632.11 m²</b>	



# STUDIO APARTMENT

## SU3-JP1/2

### 22.58 M2

SECOND FLOOR  
(HEIGHT OF THE THIRD FLOOR)



SU3-JP1/2		
01	Corridor	1,94
02	Bathroom	2,97
03	Bedroom	14,28
04	Terrace	3,39

# RESERVED



PRICE FOR 100% PAYMENT: 97,014.00€

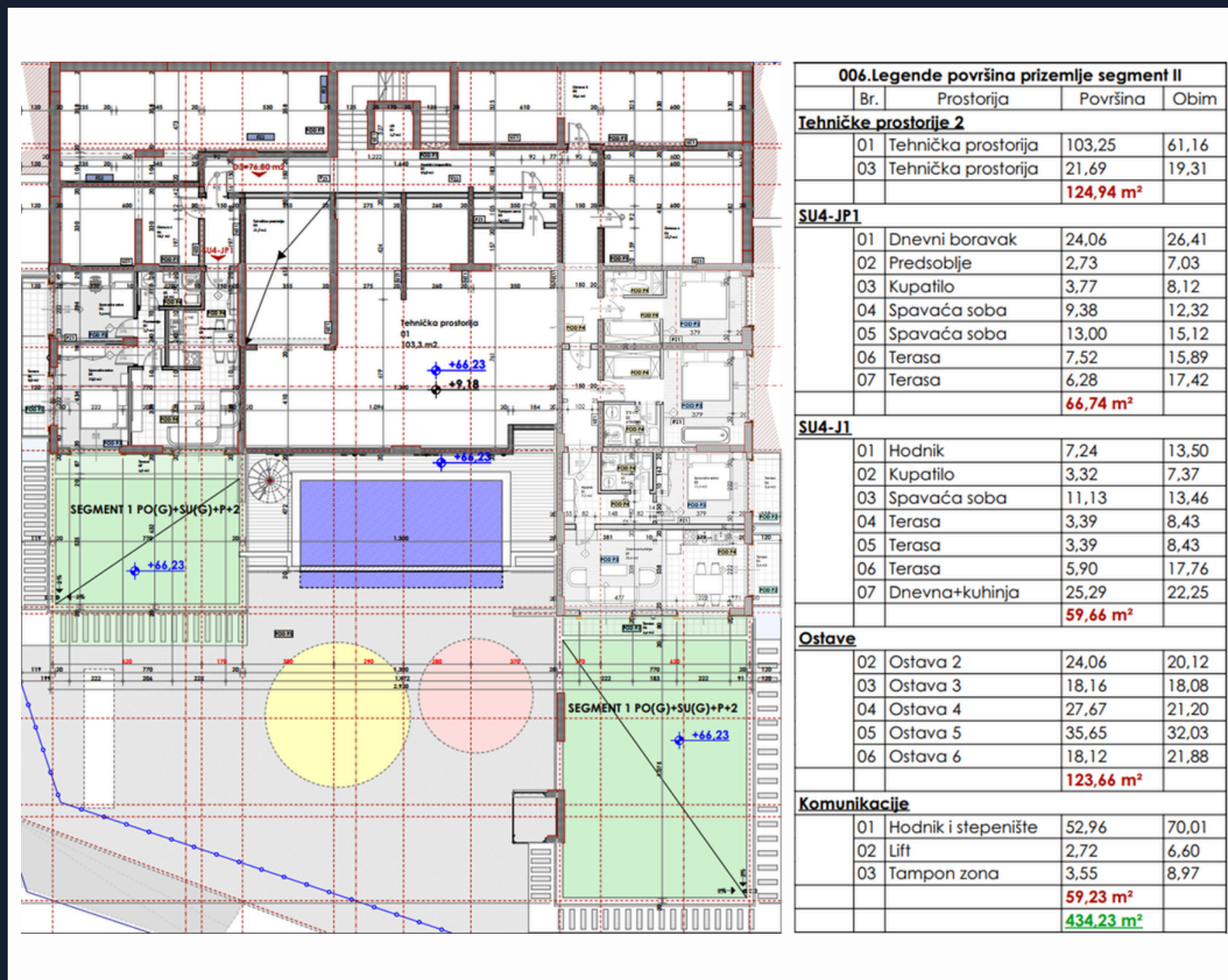
PRICE FOR PAYING IN INSTALLMENTS: 102,120.00€

#### PRICE GROWTH IN CONSTRUCTION

JAN-2026	JUN-2026	OCT-2026	JAN-2027	JUN-2027
117,438.00€	132,756.00€	145,521.00€	155,733.00€	160,839.00€



# THIRD FLOOR PLAN | SU4 |





# THREE-BEDROOM APARTMENT

## SU4-J1



## 189.16M2

112.16m2 + 77m2 green terrace

THIRD FLOOR  
(HEIGHT OF THE FOURTH FLOOR)

GREEN TERRACE + 2 BALCONIES

PANORAMIC VIEW OF THE SEA

3 BEDROOMS

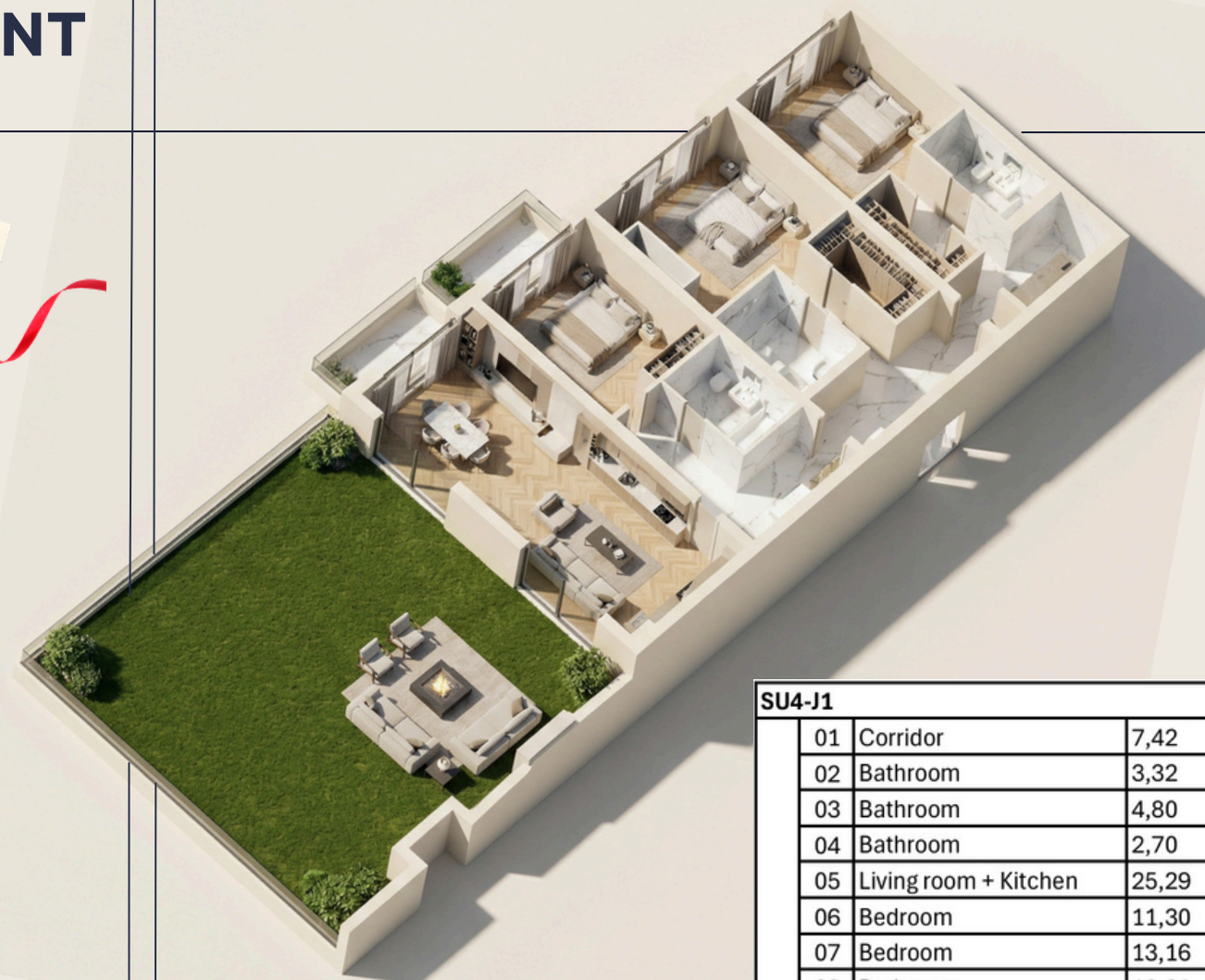
3 BATHROOMS

PRICE FOR 100% PAYMENT: 381,766.00€

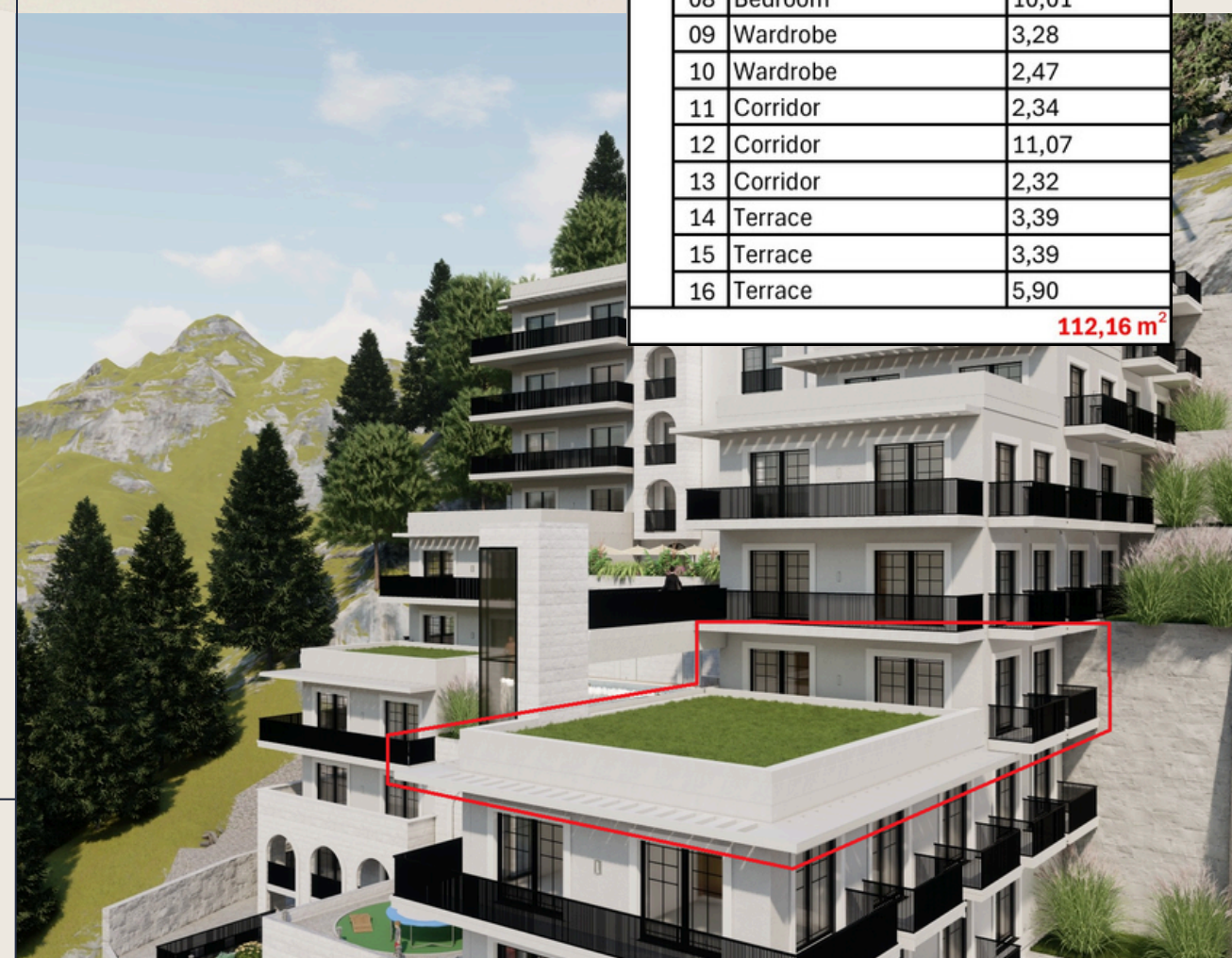
PRICE FOR PAYING IN INSTALLMENTS: 401,398.00€

### PRICE GROWTH IN CONSTRUCTION

JAN-2026	JUN-2026	OCT-2026	JAN-2027	JUN-2027
498,232.00€	594,664.00€	675,024.00€	739,312.00€	771,456.00€



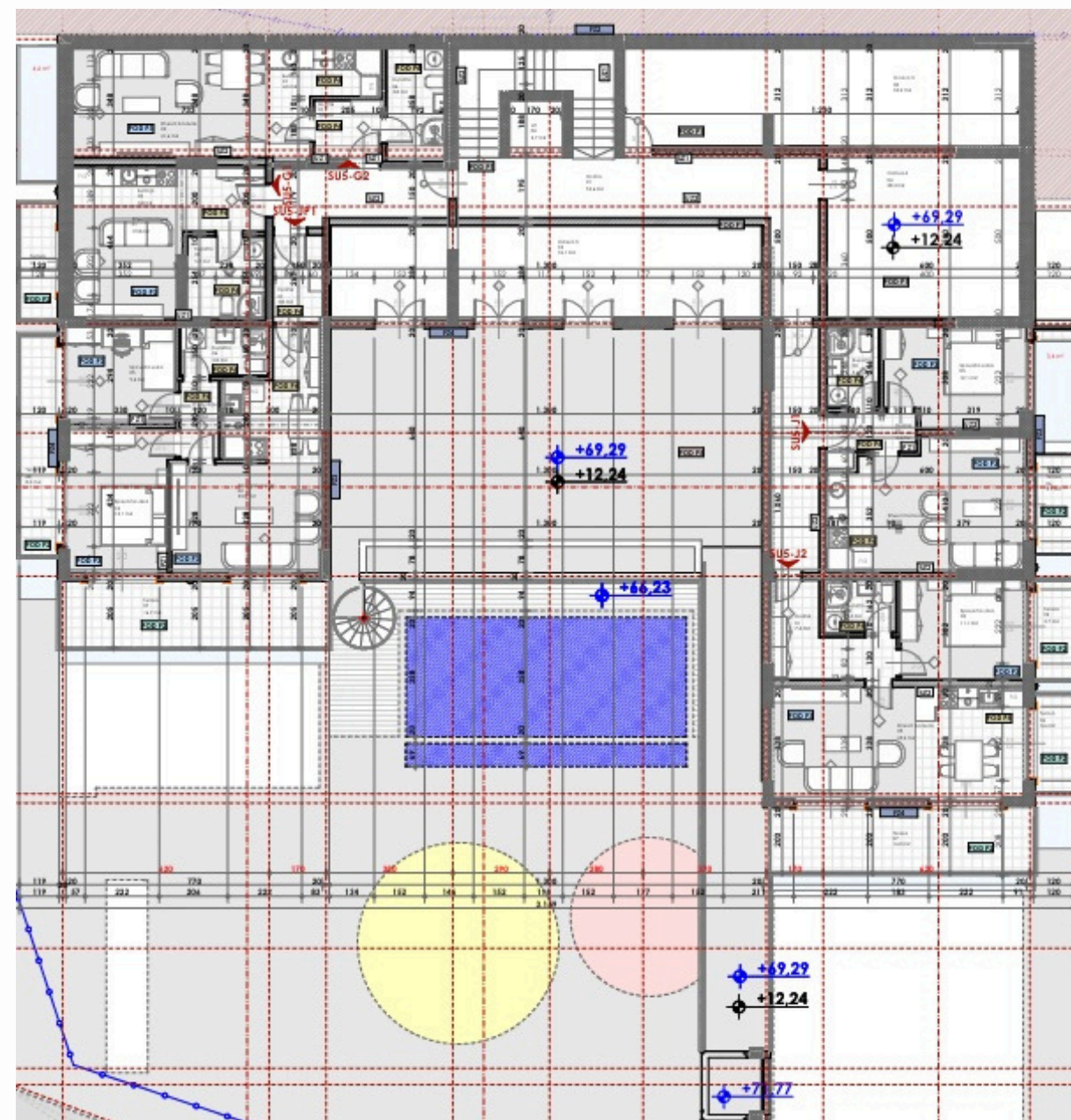
SU4-J1		
01	Corridor	7,42
02	Bathroom	3,32
03	Bathroom	4,80
04	Bathroom	2,70
05	Living room + Kitchen	25,29
06	Bedroom	11,30
07	Bedroom	13,16
08	Bedroom	10,01
09	Wardrobe	3,28
10	Wardrobe	2,47
11	Corridor	2,34
12	Corridor	11,07
13	Corridor	2,32
14	Terrace	3,39
15	Terrace	3,39
16	Terrace	5,90
		<b>112,16 m<sup>2</sup></b>



## PRICE GROWTH FOR UNITS ON THE SECOND AND THIRD FLOOR

	M2	STARTING PRICE	INSTALLMENT PRICE	OCT-2025	JAN-2026	JUN-2026	OCT-2026	JAN-2027	JUN-2027
SU3-G1	67.83	189,725.00€	198,523.00€	210,273.00€	230,622.00€	271,320.00€	305,235.00€	332,367.00€	345,933.00€
SU3-JP1/2	22.58	97,014.00€	102,120.00€	109,779.00€	117,438.00€	132,756.00€	145,521.00€	155,733.00€	160,839.00€
SU4-J1	189.16	381,766.00€	401,398.00€	450,016.00€	498,232.00€	594,664.00€	675,024.00€	739,312.00€	771,456.00€

# FOURTH FLOOR PLAN | SU5 |



**007.Legende površina i sprat segment II**

Br.	Prostorija	Površina	Obim
<b>SU5-JP1</b>			
01	Hodnik	3,80	8,14
02	Dnevni boravak	23,76	26,26
03	Predsoblje	2,73	7,03
04	Spavaća soba	13,06	15,16
05	Spavaća soba	9,38	12,32
06	Kupatilo	3,77	8,12
07	Terasa	16,20	20,66
08	Terasa	7,54	15,89
		<b>80,24 m<sup>2</sup></b>	
<b>SU5-J2</b>			
01	Hodnik	7,26	13,75
02	Kupatilo	3,28	7,34
03	Spavaća soba	11,13	13,46
04	Terasa	3,42	8,47
05	Dnevni boravak	25,29	22,25
06	Terasa	3,39	8,43
07	Terasa	15,50	20,26
		<b>69,27 m<sup>2</sup></b>	
<b>SU5-J1</b>			
01	Hodnik	3,49	8,86
02	Kupatilo	3,62	7,80
03	Spavaća soba	12,11	14,60
04	Terasa	3,33	8,32
05	Dnevni boravak	22,01	20,01
06	Terasa	3,45	8,53
		<b>48,01 m<sup>2</sup></b>	
<b>SU5-G2</b>			
01	Hodnik	3,75	7,75
02	Kupatilo	5,80	10,17
03	Kuhinja	4,28	9,35
04	Dnevni boravak	21,59	20,93
05	Terasa	4,66	10,64
		<b>40,08 m<sup>2</sup></b>	
<b>SU5-G1</b>			
01	Dnevni boravak	19,66	21,23
02	Kuhinja	3,82	8,69
03	Kupatilo	5,70	9,60
04	Terasa	4,02	9,52
		<b>33,20 m<sup>2</sup></b>	
<b>Ostave</b>			
04	Ostava 3	36,08	35,85
04	Ostava 4	28,27	21,46
05	Ostava 5	34,19	34,94
		<b>98,54 m<sup>2</sup></b>	
<b>Komunikacije</b>			
01	Hodnik	54,57	77,46
02	Lift	2,72	6,60
		<b>57,29 m<sup>2</sup></b>	
		<b>426,63 m<sup>2</sup></b>	



SU5-G2		
01	Corridor	3,75
02	Bathroom	5,80
03	Bedroom	10,09
04	Living room	11,50
05	Kitchen	4,28
06	Terrace	4,66
		<b>40,08 m<sup>2</sup></b>



## ONE-BEDROOM APARTMENT

# SU5-G2

## 40.08 M2

FOURTH FLOOR  
(HEIGHT OF THE FIFTH FLOOR)

TERRACE

VIEW OF THE SEA

1 BEDROOM

1 BATHROOM

**PRICE FOR 100% PAYMENT: 140,280.00€**

**PRICE FOR PAYING IN INSTALLMENTS: 148,269.00€**

### PRICE GROWTH IN CONSTRUCTION

JAN-2026	JUN-2026	OCT-2026	JAN-2027	JUN-2027
172,344.00€	196,392.00€	216,432.00€	232,464.00€	240,480.00€



# ONE-BEDROOM APARTMENT

## SU5-J2

### 69.27 M2

FOURTH FLOOR  
(HEIGHT OF THE FIFTH FLOOR)

TERRACE + 2 BALCONIES

PANORAMIC VIEW OF THE SEA

1 BEDROOM

1 BATHROOM

PRICE FOR 100% PAYMENT: 256,299.00€

PRICE FOR PAYING IN INSTALLMENTS: 270,153.00€

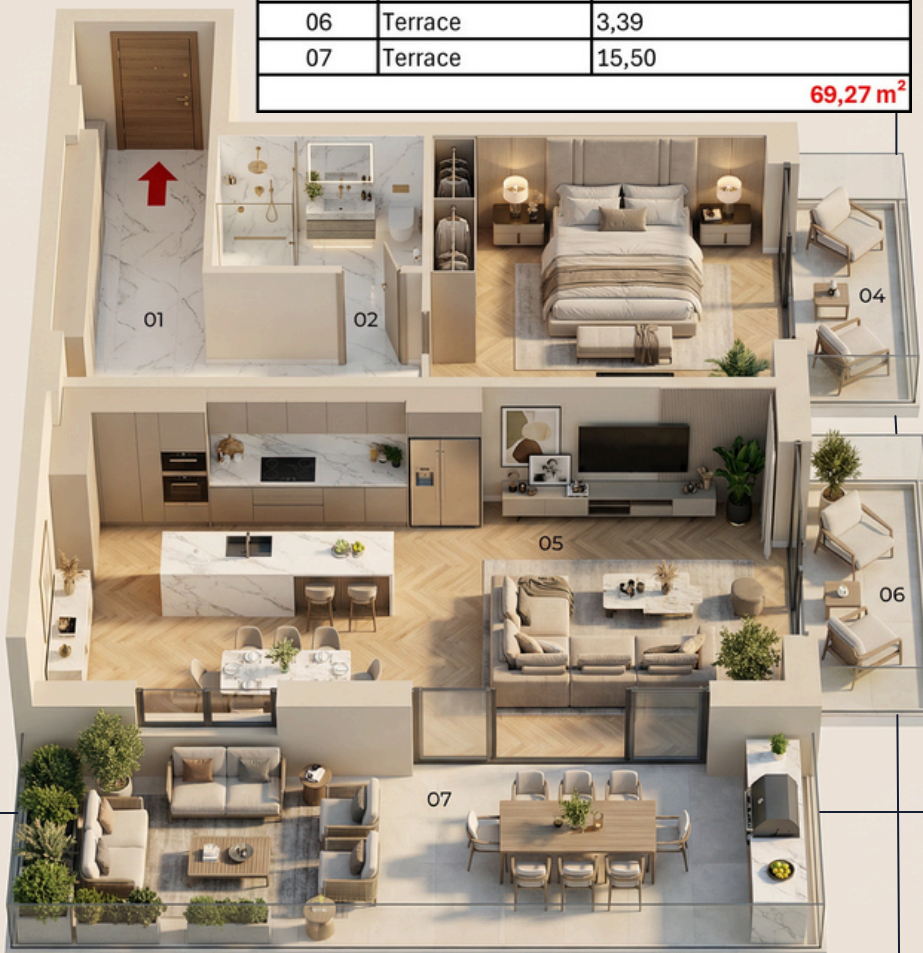
#### PRICE GROWTH IN CONSTRUCTION

JAN-2026	JUN-2026	OCT-2026	JAN-2027	JUN-2027
304,788.00€	346,350.00€	380,985.00€	408,693.00€	422,547.00€

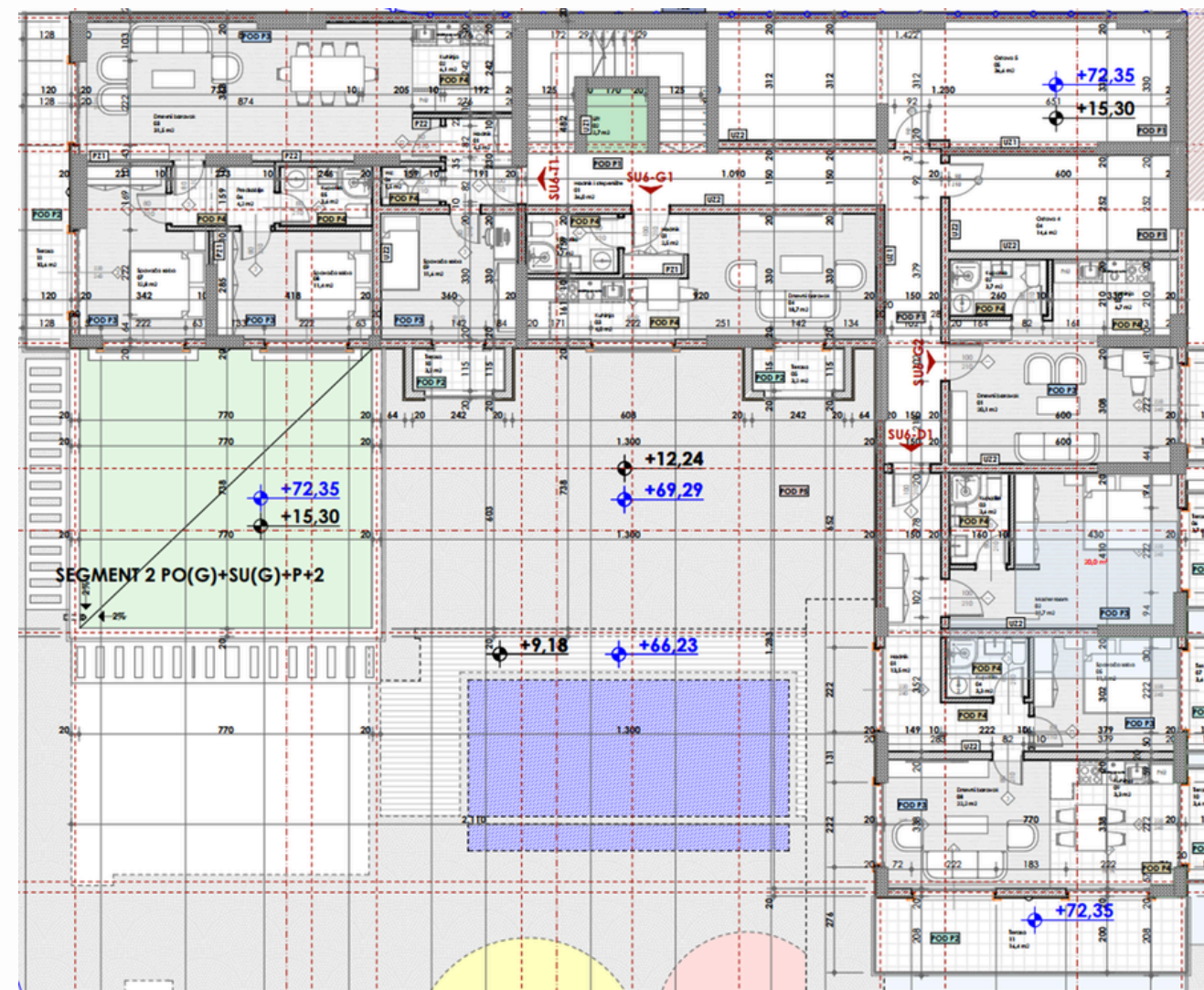


SU5-J2		
01	Corridor	7,26
02	Bathroom	3,28
03	Bedroom	11,13
04	Living room	25,29
05	Terrace	3,42
06	Terrace	3,39
07	Terrace	15,50

69,27 m<sup>2</sup>



# FIFTH FLOOR PLAN | SU6 |



**008.Legende površina II sprat segment II**

Br.	Prostorija	Površina	Obim
<b>SU6-T1</b>			
01	Hodnik	4,07	9,05
02	Kuhinja	6,12	9,91
03	Dnevni boravak	31,51	27,25
04	Wc	1,49	4,99
05	Kupaonica	3,61	7,83
06	Predspolje	4,17	8,49
07	Spavaća soba	12,84	15,77
08	Spavaća soba	11,42	13,90
09	Spavaća soba	11,61	13,64
10	Terasa	2,57	7,69
11	Terasa	10,06	20,26
		<b>99,47 m<sup>2</sup></b>	
<b>SU6-G2</b>			
01	Dnevni boravak	20,01	19,60
02	Kupaonica	3,66	7,96
03	Kuhinja	6,64	11,37
04	Terasa	3,33	8,09
		<b>33,64 m<sup>2</sup></b>	
<b>SU6-G1</b>			
01	Hodnik	2,41	6,41
02	Kupaonica	3,68	7,87
03	Kuhinja	3,96	8,21
04	Dnevni boravak	18,74	19,93
05	Terasa	2,57	7,69
		<b>31,36 m<sup>2</sup></b>	
<b>SU6-D1</b>			
01	Hodnik	13,44	22,51
02	Master room	19,56	21,52
03	Kupaonica	3,57	7,74
04	Kupaonica	3,29	7,36
05	Spavaća soba	11,13	13,46
06	Terasa	3,45	8,53
07	Terasa	3,39	8,43
08	Dnevni boravak	22,11	23,11
09	Kuhinja	3,27	8,61
10	Terasa	3,39	8,43
11	Terasa	15,86	20,66
		<b>102,46 m<sup>2</sup></b>	
<b>Ostave</b>			
04	Ostava 4	14,55	16,92
05	Ostava 5	36,55	32,53
		<b>51,10 m<sup>2</sup></b>	
<b>Komunikacije</b>			
01	Hodnik i stepenište	35,97	53,48
02	Lift	2,72	6,60
		<b>38,69 m<sup>2</sup></b>	
		<b>354,72 m<sup>2</sup></b>	



# TWO-BEDROOM APARTMENT

## SU6-D1

### 102.46 M2

FIFTH FLOOR  
(HEIGHT OF THE SIXTH FLOOR)

TERRACE + 3 BALCONIES

PANORAMIC VIEW OF THE SEA

2 BEDROOMS

2 BATHROOMS

**PRICE FOR 100% PAYMENT: 389,348.00€**

**PRICE FOR PAYING IN INSTALLMENTS: 409,840.00€**

#### PRICE GROWTH IN CONSTRUCTION

JAN-2026	JUN-2026	OCT-2026	JAN-2027	JUN-2027
461,070.00€	522,546.00€	573,776.00€	614,760.00€	635,252.00€



SU6-D1			
01	Corridor		13,44
02	Bathroom		3,57
03	Bathroom		3,29
04	Kitchen		3,27
05	Living room		22,11
06	Master room		19,56
07	Bedroom		11,13
08	Terrace		3,45
09	Terrace		3,39
10	Terrace		3,39
11	Terrace		15,86
			<b>102,46m<sup>2</sup></b>





# THREE-BEDROOM APARTMENT

## SU6-T1

### 156.30 M2

99.47m2 + 56.83m2 green terrace

FIFTH FLOOR  
(HEIGHT OF THE SIXTH FLOOR)

TERRACE + 2 BALCONIES

PANORAMIC VIEW OF THE SEA

3 BEDROOMS

2 BATHROOMS

PRICE FOR 100% PAYMENT: 486,286.00€

PRICE FOR PAYING IN INSTALLMENTS: 506,180.00€

#### PRICE GROWTH IN CONSTRUCTION

JAN-2026	JUN-2026	OCT-2026	JAN-2027	JUN-2027
594,586.00€	688,468.00€	766,703.00€	829,291.00€	860,585.00€



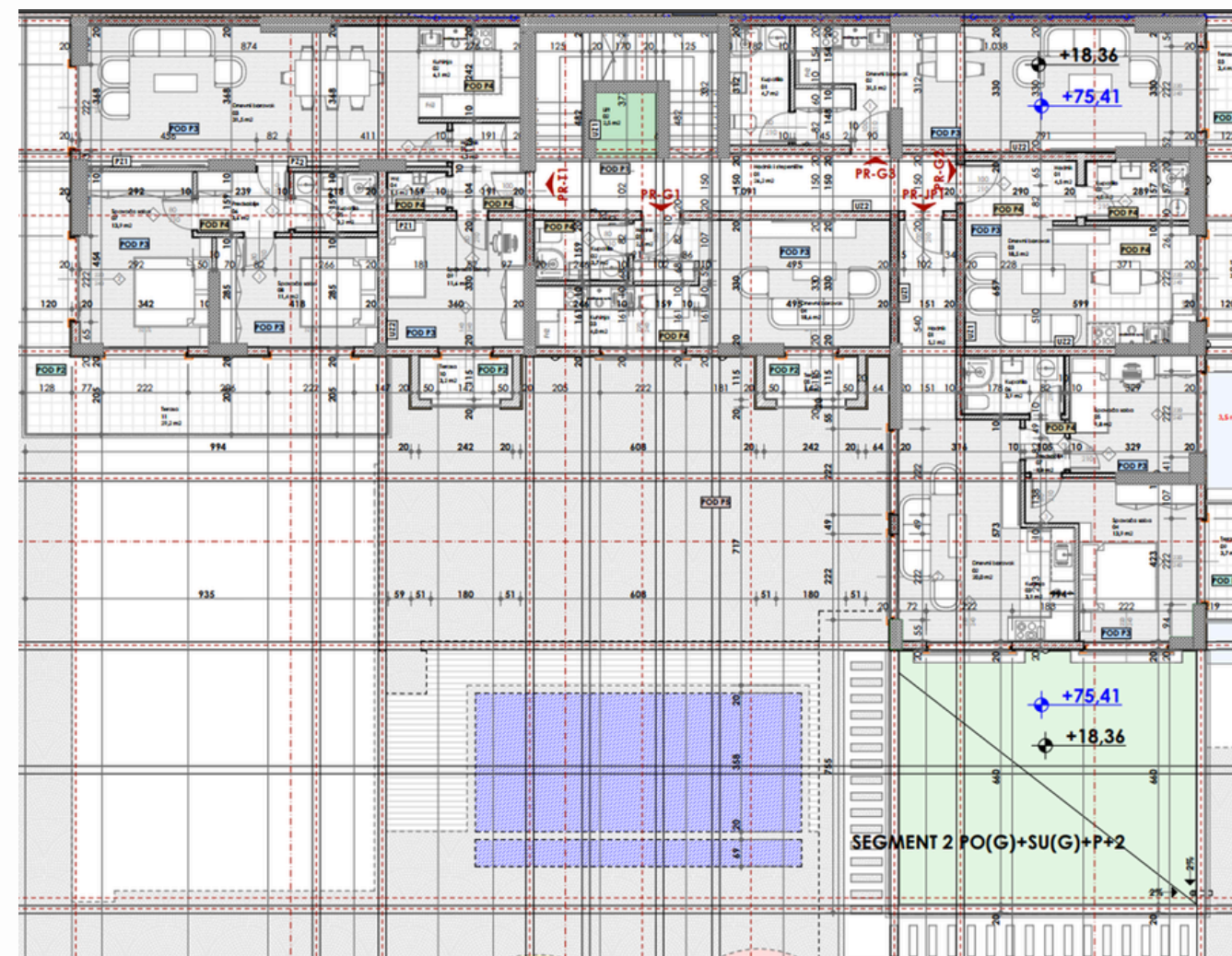
SU6-T1			
01	Corridor		4,07
02	Bathroom		3,61
03	Toilet		1,49
04	Kitchen		6,12
05	Living room		31,51
06	Hallway		4,17
07	Bedroom		12,84
08	Bedroom		11,42
09	Bedroom		11,61
10	Terrace		2,57
11	Terrace		10,06
			99,47 m <sup>2</sup>



## PRICE GROWTH FOR UNITS ON THE FOURTH AND FIFTH FLOOR

	M2	STARTING PRICE	INSTALLMENT PRICE	OCT-2025	JAN-2026	JUN-2026	OCT-2026	JAN-2027	JUN-2027
SU5-G2	40.08	140,280.00€	148,269.00€	160,320.00€	172,344.00€	196,392.00€	216,432.00€	232,464.00€	240,480.00€
SU5-J2	69.27	256,299.00€	270,153.00€	284,007.00€	304,788.00€	346,350.00€	380,985.00€	408,693.00€	422,547.00€
SU6-D1	102.46	389,348.00€	409,840.00€	430,332.00€	461,070.00€	522,546.00€	573,776.00€	614,760.00€	635,252.00€
SU6-T1	150.3	486,286.00€	506,180.00€	547,645.00€	594,586.00€	688,468.00€	766,703.00€	829,291.00€	860,585.00€

# SIXTH FLOOR PLAN | PR |



**009.Legende površina prizemlje segment III**

Br.	Prostorija	Površina	Obim
<b>PR-T1</b>			
01	Hodnik	4.07	9.05
02	Kuhinja	6.12	9.91
03	Dnevni boravak	31.54	27.28
04	Wc	1.49	4.99
05	Kupatilo	3.20	7.28
06	Predsoblje	3.64	7.80
07	Spavaća soba	13.88	15.77
08	Spavaća soba	11.42	13.90
09	Spavaća soba	11.61	13.64
10	Terasa	2.57	7.69
11	Terasa	28.65	40.56
		<b>118.19 m²</b>	
<b>PR-JP1</b>			
01	Hodnik	5.11	10.14
02	Dnevni boravak	19.98	20.90
03	Kuhinja	3.93	8.46
04	Spavaća soba	13.89	17.19
05	Spavaća soba	9.80	12.53
06	Kupatilo	3.90	8.22
07	Predsoblje	1.37	4.74
08	Terasa	3.33	8.32
09	Terasa	3.45	8.53
		<b>64.76 m²</b>	
<b>-PR-G3</b>			
01	Kupatilo	4.66	9.15
02	Dnevni boravak	31.42	34.37
03	Terasa	3.40	8.21
		<b>39.48 m²</b>	
<b>PR-G2</b>			
01	Hodnik	4.38	8.98
02	Kupatilo	3.95	8.29
03	Dnevni boravak	18.50	18.41
04	Terasa	3.45	8.53
		<b>30.28 m²</b>	
<b>PR-G1</b>			
01	Hodnik	2.41	6.41
02	Kupatilo	3.68	7.87
03	Kuhinja	3.96	8.21
04	Dnevni boravak	18.61	20.09
05	Terasa	2.57	7.69
		<b>31.23 m²</b>	
<b>Komunikacije</b>			
01	Hodnik i stepenište	26.20	39.32
02	Lift	2.51	6.34
		<b>28.71 m²</b>	
		<b>312.65 m²</b>	

# ONE-BEDROOM APARTMENT

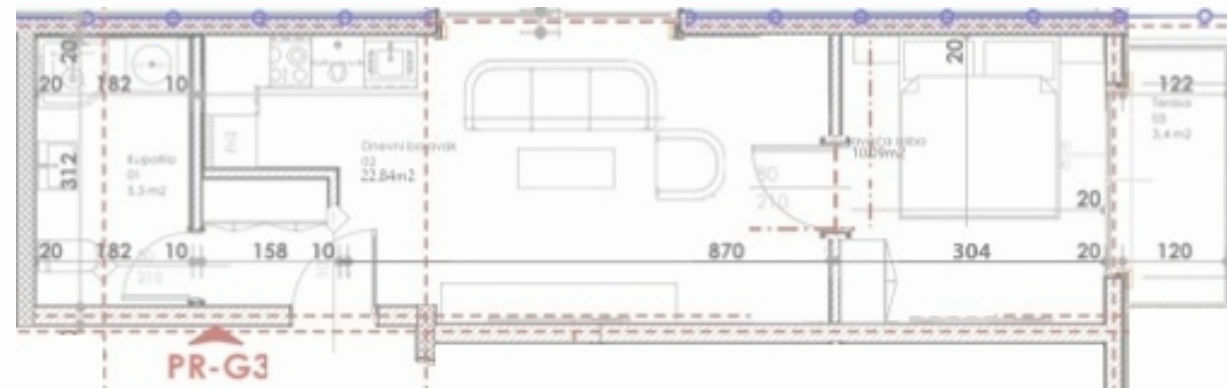
**PR-G3**



**39.48 M2**

SIXTH FLOOR

(HEIGHT OF THE SEVENTH FLOOR)



PR-G3		
01	Bathroom	4,66
02	Bedroom	10,09
03	Living room	21,33
04	Terrace	3,40

# RESERVED



PRICE FOR 100% PAYMENT: 133,496.00€

PRICE FOR PAYING IN INSTALLMENTS: 140,712.00€

### PRICE GROWTH IN CONSTRUCTION

JAN-2026	JUN-2026	OCT-2026	JAN-2027	JUN-2027
155,144.00€	169,576.00€	187,616.00€	202,048.00€	209,264.00€





# TWO-BEDROOM APARTMENT

## PR-JP1

### 115.76M2

64.76m2 + 51m2 green terrace

SIXTH FLOOR  
(HEIGHT OF THE SEVENTH FLOOR)

GREEN TERRACE + 2 BALCONIES

PANORAMIC VIEW OF THE SEA

2 BEDROOMS

2 BATHROOMS

PRICE FOR 100% PAYMENT: 352,014.00€

PRICE FOR PAYING IN INSTALLMENTS: 364,966.00€

#### PRICE GROWTH IN CONSTRUCTION

JAN-2026	JUN-2026	OCT-2026	JAN-2027	JUN-2027
451,464.00€	497,768.00€	555,648.00€	601,952.00€	625,104.00€



PR-JP1		
01	Corridor	5,11
02	Kitchen	3,93
03	Living room	19,98
04	Bathroom	3,90
05	Bedroom	13,89
06	Bedroom	9,80
07	Hallway	1,37
08	Terrace	3,33
09	Terrace	3,45

64,76m<sup>2</sup>





PR-T1			
01	Corridor		4,07
02	Bathroom		3,20
03	Toilet		1,49
04	Kitchen		6,12
05	Living room		31,54
06	Hallway		3,64
07	Bedroom		13,88
08	Bedroom		11,42
09	Bedroom		11,61
10	Terrace		2,57
11	Terrace		28,65
			<b>118,19 m<sup>2</sup></b>

## THREE-BEDROOM APARTMENT

### PR-T1

### 118.19 M2

SIXTH FLOOR  
(HEIGHT OF THE SEVENTH FLOOR)

TERRACE + BALCONY

PANORAMIC VIEW OF THE SEA

3 BEDROOMS

2 BATHROOMS

PRICE FOR 100% PAYMENT: 460,980.00€

PRICE FOR PAYING IN INSTALLMENTS: 486,620.00€

#### PRICE GROWTH IN CONSTRUCTION

JAN-2026	JUN-2026	OCT-2026	JAN-2027	JUN-2027
531,900.00€	579,180.00€	638,280.00€	685,560.00€	709,200.00€

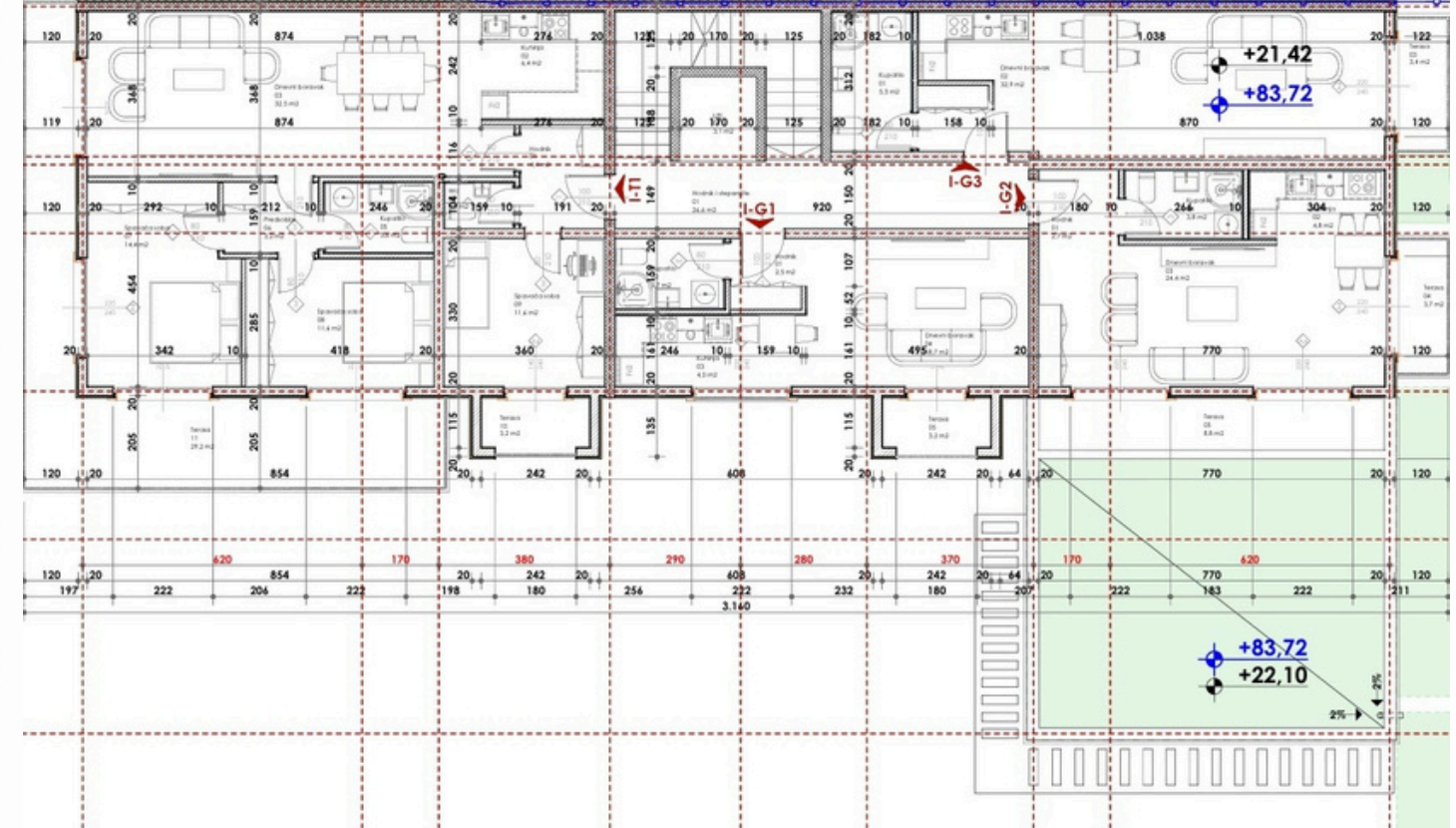


# PRICE GROWTH FOR UNITS ON THE SIXTH FLOOR

	M2	STARTING PRICE	INSTALLMENT PRICE	OCT-2025	JAN-2026	JUN-2026	OCT-2026	JAN-2027	JUN-2027
PR-G3	39.48	133,496.00€	140,712.00€	144,320.00€	155,144.00€	169,576.00€	187,616.00€	202,048.00€	209,264.00€
PR-JP1	115.76	352,014.00€	364,966.00€	416,736.00€	451,464.00€	497,768.00€	555,648.00€	601,952.00€	625,104.00€
PR-T1	118.19	460,980.00€	486,620.00€	496,440.00€	531,900.00€	579,180.00€	638,280.00€	685,560.00€	709,200.00€

# SEVENTH FLOOR PLAN III

010. Legende površina VII sprat segment III		
Br.	Prestorija	Površina
<b>I-T1</b>		
01	Hodnik	4,07
02	Kuhinja	6,38
03	Dnevni boravak	31,54
04	Wc	1,49
05	Kupatilo	3,62
06	Predsobije	4,18
07	Spavaća soba	12,85
08	Spavaća soba	11,42
09	Spavaća soba	11,61
10	Terasa	2,57
11	Terasa	28,65
		<b>118,38m<sup>2</sup></b>
<b>I-G1</b>		
01	Hodnik	2,41
02	Kupatilo	3,68
03	Dnevni boravak	18,74
04	Kuhinja	3,96
05	Terasa	2,57
		<b>31,36m<sup>2</sup></b>
<b>I-G2</b>		
01	Hodnik	2,69
02	Dnevni boravak	14,4
03	Spavaća soba	9,2
04	Garderober	4,53
05	Kupatilo	3,84
06	Terasa	3,45
07	Terasa	8,83
		<b>46,94m<sup>2</sup></b>
<b>I-G3</b>		
01	Kupatilo	4,66
02	Dnevni boravak	21,33
03	Spavaća soba	10,09
04	Terasa	3,40
		<b>39,48m<sup>2</sup></b>
<b>Komunikacije</b>		
01	Hodnik i stepenište	26,64
02	Lift	3,10
		<b>29,74m<sup>2</sup></b>





# ONE-BEDROOM APARTMENT

**I-G2**



**87.34 M2**

**47.34m2 +40m2 green terrace**

SEVENTH FLOOR  
(HEIGHT OF THE EIGHT FLOOR)

TERRACE

PANORAMIC VIEW OF THE SEA

0/1 BEDROOMS

1 BATHROOM

**PRICE FOR 100% PAYMENT: 269,360.00€**

**PRICE FOR PAYING IN INSTALLMENTS: 278,828.00€**

### PRICE GROWTH IN CONSTRUCTION

JAN-2026	JUN-2026	OCT-2026	JAN-2027	JUN-2027
323,158.00€	358,094.00€	401,764.00€	436,700.00€	454,168.00€



I-G2			
01	Corridor		2,69
02	Living room		14,8
03	Bedroom		9,2
04	Kitchen		4,53
05	Bathroom		3,84
06	Terrace		3,45
07	Terrace		8,83
			<b>47,34m<sup>2</sup></b>





# ONE-BEDROOM APARTMENT

**I-G3**



**39.48 M2**

SEVENTH FLOOR  
(HEIGHT OF THE EIGHT FLOOR)

TERRACE

VIEW OF THE SEA

0/1 BEDROOMS

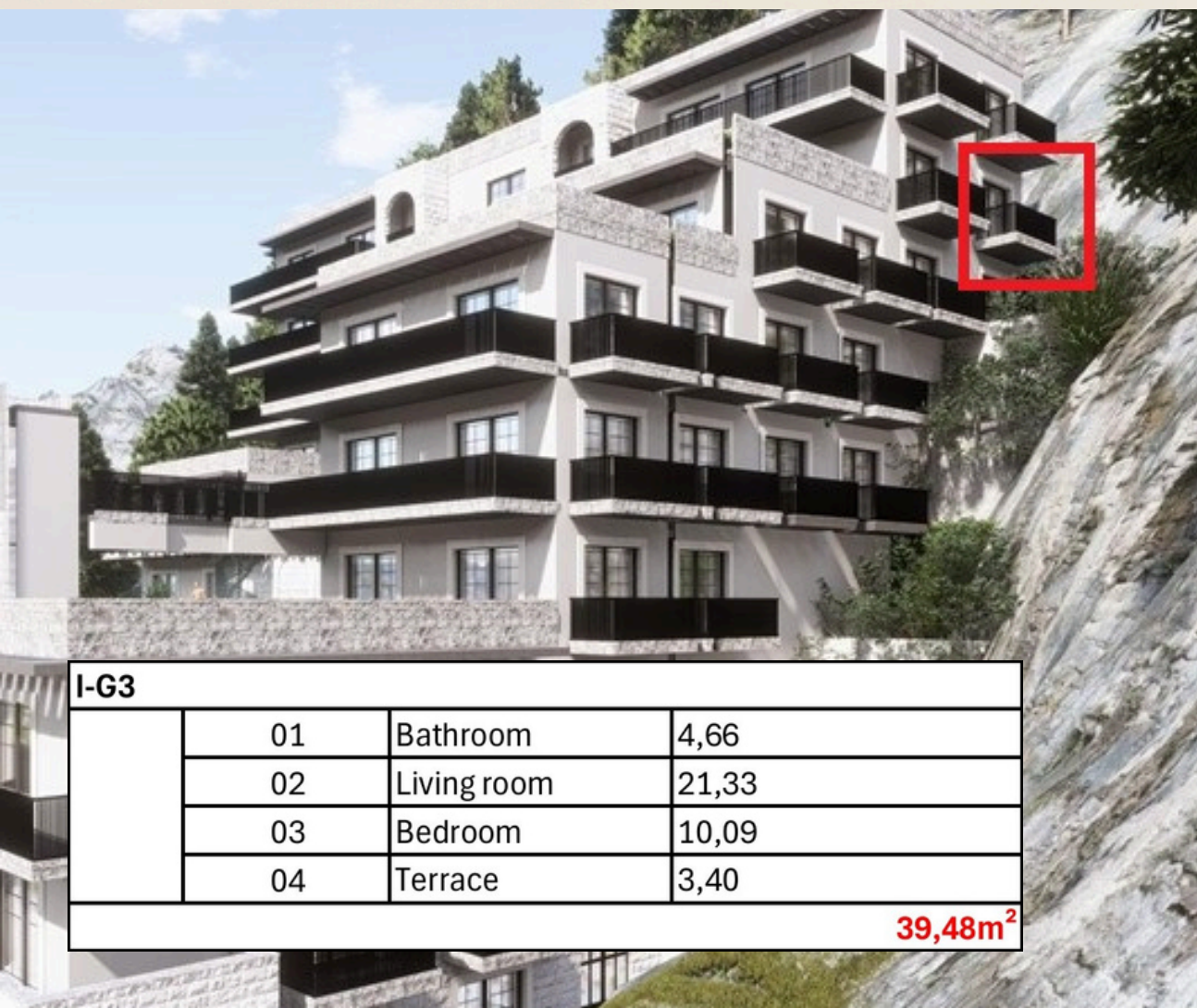
1 BATHROOM

**PRICE FOR 100% PAYMENT: 150,024.00€**

**PRICE FOR PAYING IN INSTALLMENTS: 157,920.00€**

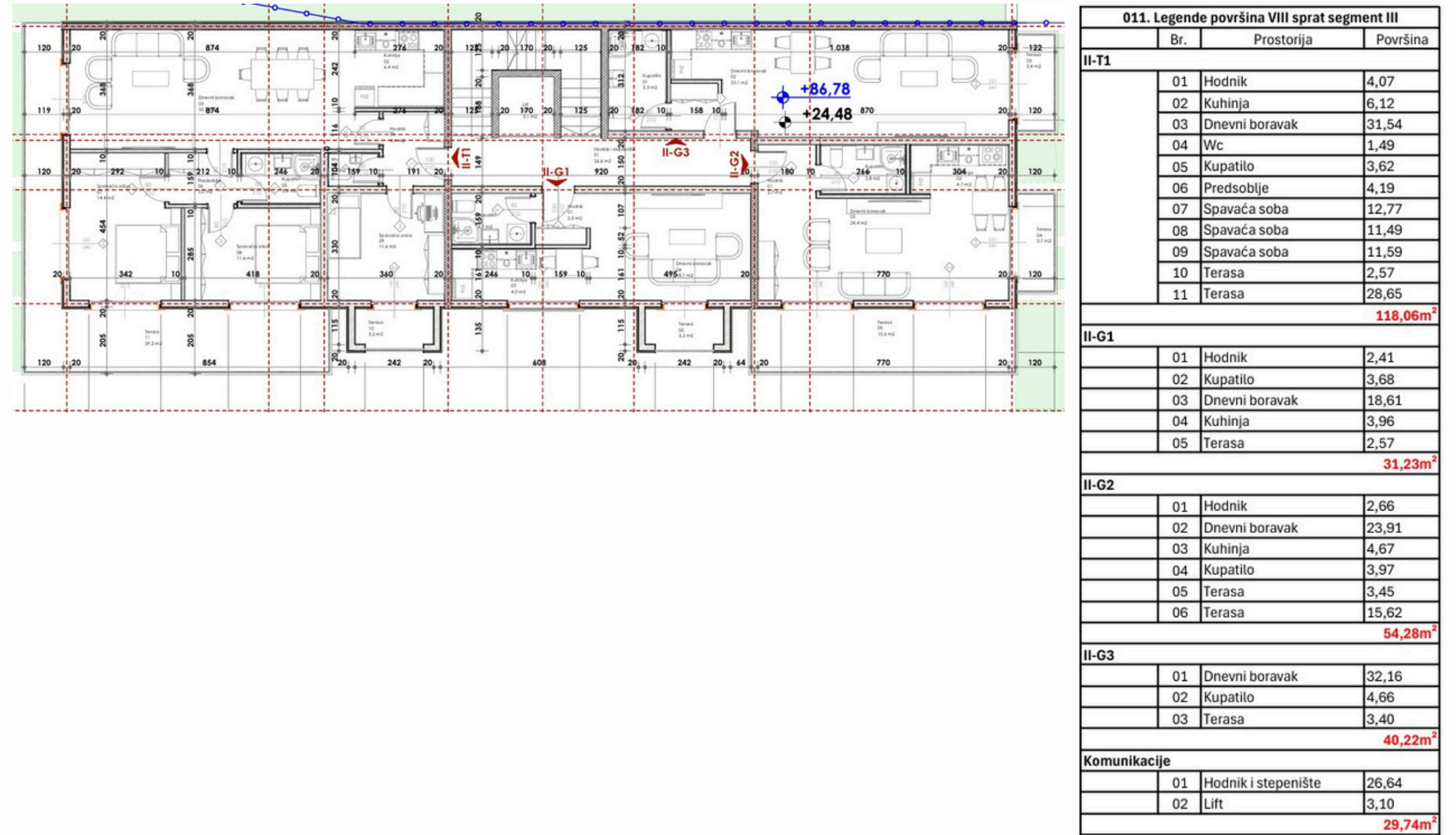
### PRICE GROWTH IN CONSTRUCTION

	JAN-2026	JUN-2026	OCT-2026	JAN-2027	JUN-2027
	177,660.00€	193,452.00€	213,192.00€	228,984.00€	236,880.00€



I-G3			
01	Bathroom	4,66	
02	Living room	21,33	
03	Bedroom	10,09	
04	Terrace	3,40	
		<b>39,48m<sup>2</sup></b>	

# EIGHTH FLOOR PLAN III





# ONE-BEDROOM APARTMENT

## II-G2

### 54.28 M2

EIGHT FLOOR  
(HEIGHT OF THE NINTH FLOOR)

TERRACE

PANORAMIC VIEW OF THE SEA

0/1 BEDROOMS

1 BATHROOM

**PRICE FOR 100% PAYMENT: 222,548.00€**

**PRICE FOR PAYING IN INSTALLMENTS: 233,404.00€**

#### PRICE GROWTH IN CONSTRUCTION

JAN-2026	JUN-2026	OCT-2026	JAN-2027	JUN-2027
260,544.00€	282,256.00€	309,396.00€	331,108.00€	341,964.00€



II-G2			
01	Corridor		2,66
02	Living room		23,91
03	Kitchen		4,67
04	Bathroom		3,97
05	Terrace		3,45
06	Terrace		15,62
			<b>54,28m<sup>2</sup></b>



# THREE-BEDROOM APARTMENT

## II-T1

### 358.06 M2

118.06m2 +240m2 green roof terrace

EIGHT FLOOR  
(HEIGHT OF THE NINTH FLOOR)

TERRACE + BALCONY

PANORAMIC VIEW OF THE SEA

3 BEDROOMS

2 BATHROOMS

PRICE FOR 100% PAYMENT: 976,046.00€

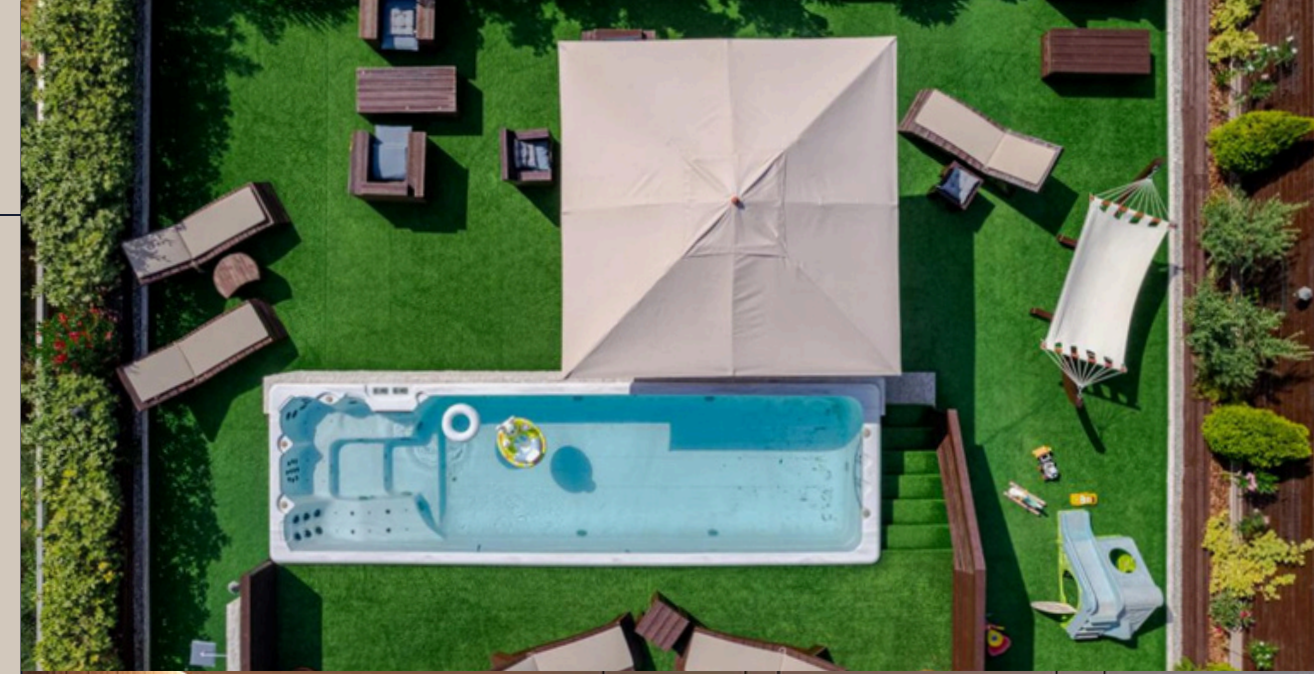
PRICE FOR PAYING IN INSTALLMENTS: 1,000,046.00€

#### PRICE GROWTH IN CONSTRUCTION

JAN-2026	JUN-2026	OCT-2026	JAN-2027	JUN-2027
1,142,592.00€	1,237,808.00€	1,356,828.00€	1,452,044.00€	1,499,652.00€



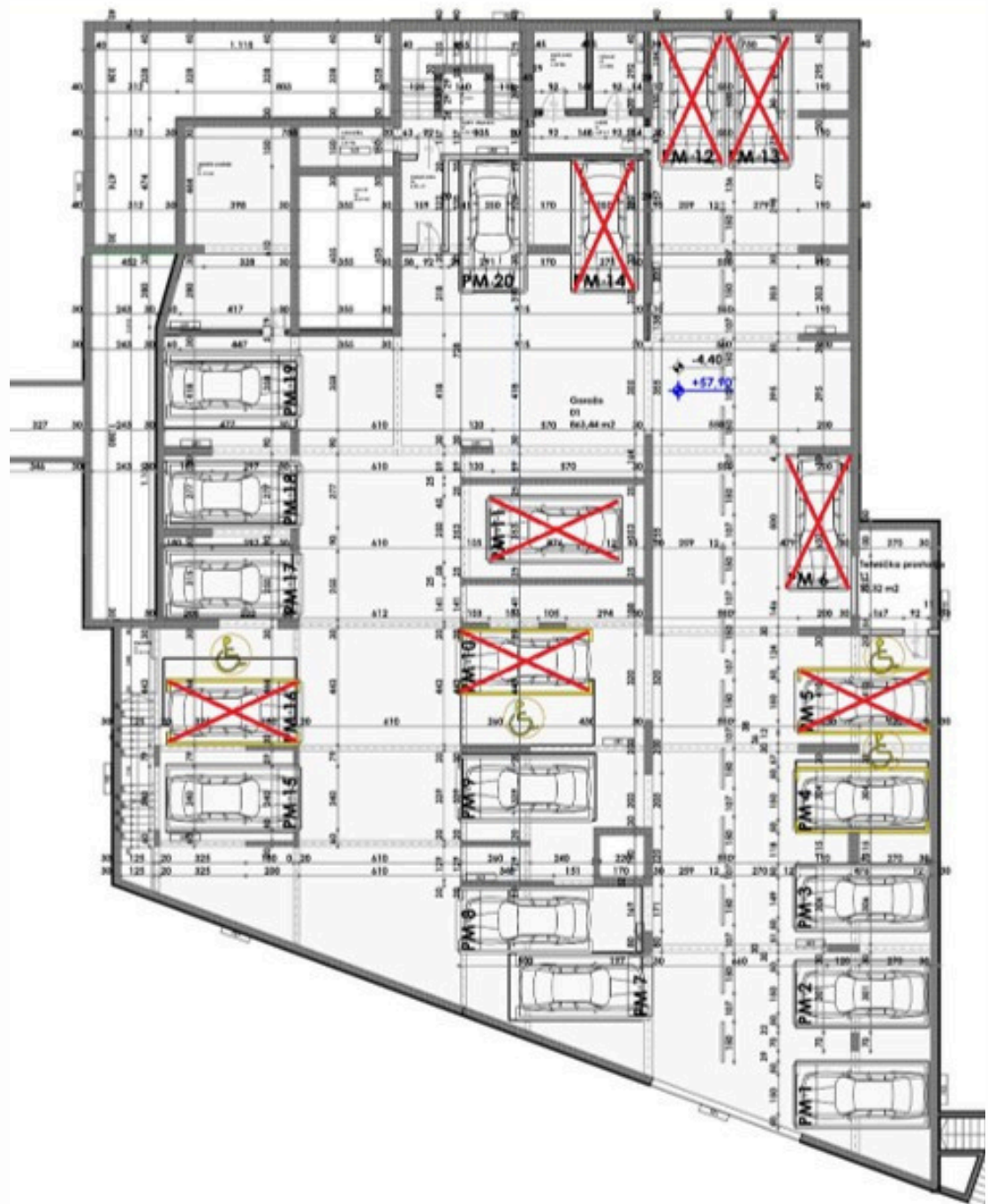
II-T1			
01	Corridor		4,07
02	Kitchen		6,12
03	Living room		31,54
04	Toilet		1,49
05	Bathroom		3,62
06	Hallway		4,19
07	Bedroom		12,77
08	Bedroom		11,49
09	Bedroom		11,59
10	Terrace		2,57
11	Terrace		28,65
			<b>118,06m<sup>2</sup></b>



## PRICE GROWTH FOR UNITS ON THE SEVENTH AND EIGHT FLOOR

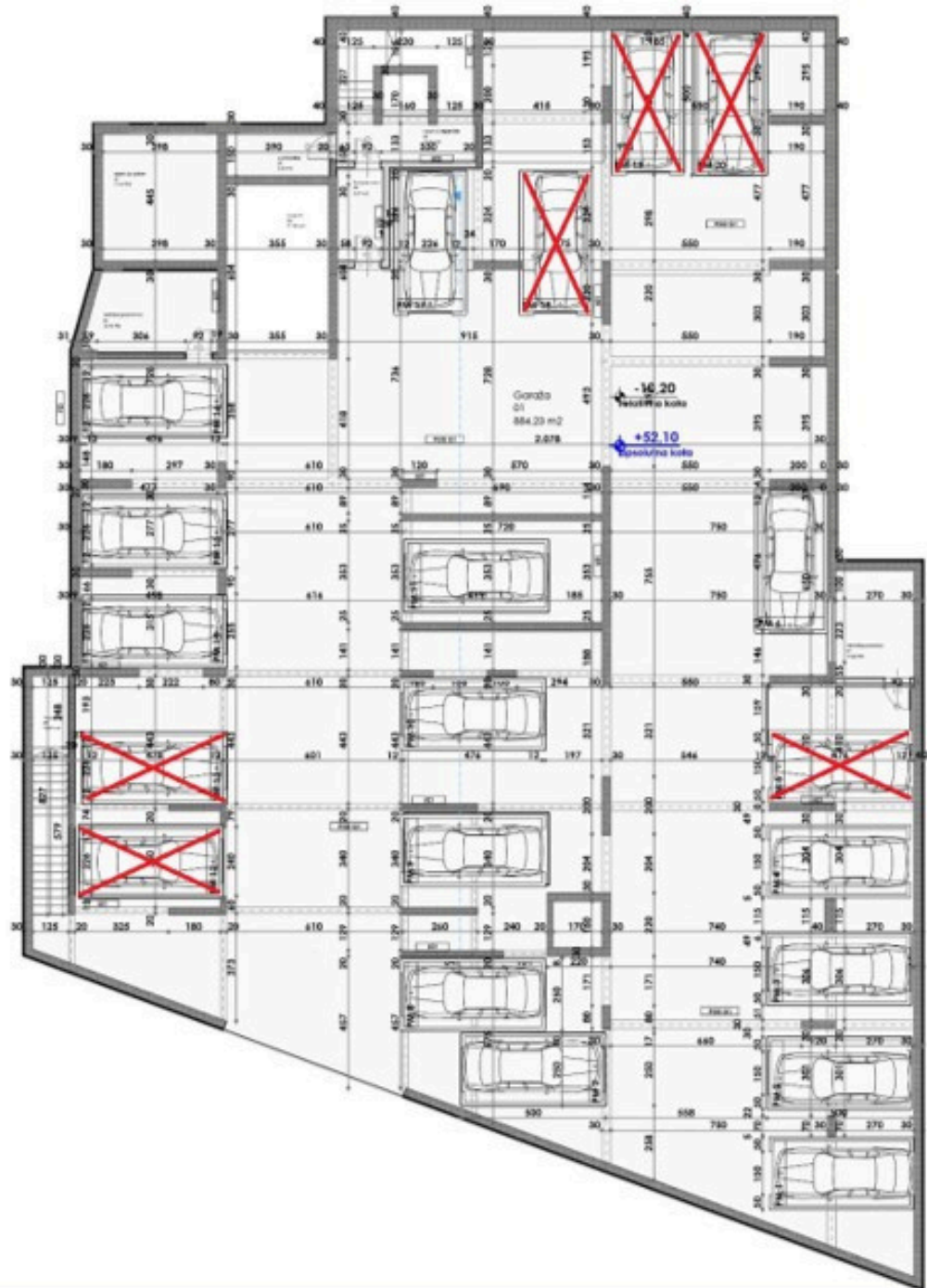
	M2	STARTING PRICE	INSTALLMENT PRICE	OCT-2025	JAN-2026	JUN-2026	OCT-2026	JAN-2027	JUN-2027
I-G2	86.94	269,360.00€	278,828.00€	296,956.00€	323,158.00€	358,094.00€	401,764.00€	436,700.00€	454,168.00€
I-G3	39.48	150,024.00€	157,920.00€	165,816.00€	177,660.00€	193,452.00€	213,192.00€	228,984.00€	236,880.00€
II-G2	54.28	222,548.00€	233,404.00€	244,260.00€	260,544.00€	282,256.00€	309,396.00€	331,108.00€	341,964.00€
II-T1	358.06	976,046.00€	1,000,046.00€	1,071,180.00€	1,142,592.00€	1,237,808.00€	1,356,828.00€	1,452,044.00€	1,499,652.00€

## AVAILABLE PARKING SPACES ON THE -1 FLOOR



PARKING SPACES	PRICE	AVAILABILITY
PM1	35,000.00€	AVAILABLE
PM2	35,000.00€	AVAILABLE
PM3	35,000.00€	AVAILABLE
PM4	35,000.00€	AVAILABLE
PM5	35,000.00€	SOLD
PM6	35,000.00€	AVAILABLE
PM7	35,000.00€	AVAILABLE
PM8	35,000.00€	AVAILABLE
PM9	35,000.00€	SOLD
PM10	35,000.00€	SOLD
PM11	35,000.00€	SOLD
PM12	35,000.00€	SOLD
PM13	35,000.00€	SOLD
PM14	35,000.00€	SOLD
PM15	35,000.00€	SOLD
PM16	35,000.00€	SOLD
PM17	35,000.00€	AVAILABLE
PM18	35,000.00€	SOLD
PM19	35,000.00€	SOLD
PM20	35,000.00€	SOLD

## AVAILABLE PARKING SPACES ON THE -2 FLOOR



PARKING SPACES	PRICE	AVAILABILITY
PM1	35,000.00€	AVAILABLE
PM2	35,000.00€	AVAILABLE
PM3	35,000.00€	AVAILABLE
PM4	35,000.00€	AVAILABLE
PM5	35,000.00€	SOLD
PM6	35,000.00€	AVAILABLE
PM7	35,000.00€	AVAILABLE
PM8	35,000.00€	AVAILABLE
PM9	35,000.00€	SOLD
PM10	35,000.00€	SOLD
PM11	35,000.00€	SOLD
PM12	35,000.00€	SOLD
PM13	35,000.00€	SOLD
PM14	35,000.00€	SOLD
PM15	35,000.00€	SOLD
PM16	35,000.00€	SOLD
PM17	35,000.00€	AVAILABLE
PM18	35,000.00€	SOLD
PM19	35,000.00€	SOLD
PM20	35,000.00€	SOLD

# OFFERS FOR STORAGE ROOMS

OSTAVA BR.	SPRAT	m <sup>2</sup>	CIJENA	STAN NA SPRATU
1	Prizemlje	17,98	€ 26,970.00	SU1-JP1
2	Prizemlje	23,82	€ 35,730.00	SU1-JP1
3	Prizemlje	17,72	€ 26,580.00	SU1-JP1
4	Prizemlje	27,83	€ 41,745.00	SU1-JP1
5	Prizemlje	35,42	€ 53,130.00	SU1-JP1
6	Prizemlje	10,58	€ 15,870.00	SU1-JP1
2	1. sprat	23,80	€ 35,700.00	SU2-J1, SU2-JP1
4	1. sprat	27,67	€ 41,505.00	SU2-J1, SU2-JP1
5	1. sprat	35,70	€ 53,550.00	SU2-J1, SU2-JP1
3	2. sprat	17,71	€ 26,565.00	SU3-J2, SU3-J1, SU3-JP1
4	2. sprat	27,67	€ 41,505.00	SU3-J2, SU3-J1, SU3-JP1
5	2. sprat	35,77	€ 53,655.00	SU3-J2, SU3-J1, SU3-JP1
3	3. sprat	18,16	€ 27,240.00	
5	3. sprat	35,65	€ 53,475.00	
5	5. sprat	36,55	€ 54,825.00	SU6-D1, SU6-T1